

 **NEW HOLLAND**

**E195**

**NEW HOLLAND KOBELCO**



|                        |                            |
|------------------------|----------------------------|
| NET FLYWHEEL POWER     | 95 kW - 130 hp             |
| OPERATING WEIGHT (MAX) | 20 030 kg                  |
| BUCKET CAPACITY        | 0.53 - 1.10 m <sup>3</sup> |

 **NEW HOLLAND**

PROVEN PERFORMANCE

# E195\*

- EVOLUTION IN TECHNOLOGY
- EVOLUTION IN PRODUCTIVITY AND CONSUMPTION
- EVOLUTION IN COMFORT AND SAFETY
- EVOLUTION IN EASY MAINTENANCE AND SERVICEABILITY
- EVOLUTION IN EQUIPMENT AND VERSATILITY





# E195 SPECIFICATIONS



## TIER-2 EMISSIONED ENGINE

Net flywheel power (ISO 14396) .....95 kW/130 hp  
 Governed rpm .....2200  
 Make and model .....CNH F4BE0484D\*D608  
 Type .....diesel 4-stroke, direct injection, turbocharged and intercooler  
 Displacement .....3.9 l  
 Number of cylinders .....4  
 Bore x stroke .....102 x 120 mm  
 Maximum torque at 1400 rpm .....450 Nm

**Remote engine oil filter** for easy replacement

**Electronic engine rpm control**, dial type

**Auto-Idling selector** returns engine to minimum rpm when all controls are in neutral position

**-15° outside temperature start** as standard equipment (-25° optional)

*The engine complies with 97/98/CE STAGE 2 standards*



## ELECTRICAL SYSTEM

Voltage .....24 V  
 Alternator .....70 A  
 Starter motor .....4 kW  
 Standard maintenance-free batteries .....2  
 Capacity .....100 Ah



## HYDRAULIC SYSTEM

**S.H.S. (Smart Hydraulic System)** for perfect controllability and simultaneity of all movements

**A.I. (Artificial Intelligence)** on-board computer

**A.P.S. (Automatic Priority System)** device

**Computerized pumps delivery and main control valve actuation** in relation to manipulators stroke

**E.S.S.C. (Engine Speed Sensing Control)** device for total installed hydraulic power exploitation

**High definition E.T.U. (EASY TO USE) multi-function monitor** incorporating:

- Maintenance programme
- Self Diagnosis System
- Operating Data Storage (engine rpm/operating pressure etc.)

**Mechatronic Work Selector (M.W.S.):**

- **Standard Mode (W)** - Standard operating mode
- **Heavy/Mechatronic Mode (H/M)** - Maximum hydraulic power for top productivity. In this mode, the unit **"learns"** the type of operation being completed after 2 cycles and automatically selects maximum efficiency/speed and operating precision with the **A.P.S. (Automatic Priority System)** device
- **Attachments Mode (A)** - Possibility of selecting and storing delivery required for special tools from the operator compartment

Continuous untimed insertion **Power Boost Device**. Continuous insertion of the device when selected ensures maximum diggability and productivity in the toughest applications.

**Standard double pumps flow** device

**Piping pressure discharge push button** to facilitate tooling changeover without piping oil leakage.

**Two-directional crusher/hammer system**

Main pumps:

Two variable delivery pumps with electronic delivery adjustment. Pumps automatically revert to zero delivery with controls in neutral.

Maximum delivery .....2 x 176 l/min

Piloting circuit gear type pump

Maximum delivery .....22 l/min

Maximum operating pressure:

Equipment/travel .....34.3 MPa  
 Swing .....30.0 MPa  
 Power Boost .....37.8 MPa  
 Hydraulic cylinders .....double effect  
 - Lift (2) - bore x stroke .....110 x 1150 mm  
 - Dipperstick (1) - bore x stroke .....130 x 1290 mm  
 - Bucket (1) - bore x stroke .....110 x 1105 mm  
 - Positioning (only triple articulation)  
 bore x stroke .....135 x 1000 mm

**Independent hammer/positioning control**



## TRANSMISSION

Type .....hydrostatic, two-speeds  
 Travel motors .....2, axial piston type, double displacement  
 Brakes .....oil bath discs type, automatically applied and hydraulically released  
 Final drive .....oil bath, planetary reduction  
 Gradeability (continuous) .....70% (35°)  
 Travel speeds:

low .....from 0 to 3.5 km/h  
 high .....from 0 to 5.0 km/h

**Automatic DownShift device:** to move travel motors to maximum displacement position with selector on "high speed" position when greater traction is required.



## SWING

Swing motor .....axial piston type  
 Swing brake .....oil bath discs type, automatically applied and hydraulically released

Final drive .....oil bath, planetary reduction  
 Swing ring .....grease bath type  
 Swing speed .....10.0 rpm



## CAB AND CONTROLS

Transparent cab roof.

Standard automatic conditioning.

Controls .....piloted  
 Two cross path manipulators actuate all equipment movements and upperstructure swing.

Two pedals with hand levers control all track movements, counter-rotation included.

A safety lever completely neutralizes the piloting circuit



## UNDERCARRIAGE

X-frame undercarriage design

Reinforced track chain with sealed bushings.

|                                | E195EL      | E195LC             |
|--------------------------------|-------------|--------------------|
| Track rollers (each side)      | 7           | 7                  |
| Carrier rollers (each side)    | 2           | 2                  |
| Length of track on ground (mm) | 3370        | 3370               |
| Gauge (mm)                     | 1990        | 2200               |
| Shoes (mm)                     | 500-600-700 | 600-700<br>800-900 |



## CAPACITIES

Engine ..... litres  
 Lube oil .....15  
 Coolant .....18  
 Fuel tank .....165  
 Hydraulic system .....150

# STANDARD EQUIPMENT

- Auto-Idling device
- Batteries, maintenance free
- Cell phone holder with recharge socket
- Centralised boom lubrication
- Cyclone pre-filter
- Double pumps flow device
- Electric fuel pump
- Engine rpm electronic control
- E.T.U. (Easy to Use) multi-function electronic monitor
- Foot pedal or levers travel control
- Front seals hydraulic piping and connections
- Grease bath slewing ring
- Hammer/crusher system predisposition
- HD sealed chains
- Heated seat mechanically suspended
- Horn
- Hydraulically suspended cab with transparent opening roof and automatic air-conditioning system
- Hydraulic travel end cylinders
- Main control valve with antidrift valves
- Monobloc boom or triple articulation
- M.W.S. (Mechatronic Mode Selector)
- Power Boost device
- Radio set
- Shoes:
  - EL version - 500 mm
  - LC version - 600 mm
- S.H.S. (Smart Hydraulic System)
- Swing and travel motors with automatic disc type brakes
- Tier 2 emissioned diesel engine
- Tool kit
- Two-speed intermittent operation windshield wiper
- Two travel speeds with Automatic Down Shift device

# OPTIONAL EQUIPMENT

- Air suspension heated operator seat
- Anti-drop valves on boom lift cylinders
- Anti-drop valves on Dipperstick cylinder
- 2200 mm Dipperstick
- 2600mm Dipperstick
- 3100mm Dipperstick
- Hammer/crusher predisposition
- Hammer piping on booms
- Hydraulic quick coupler predispositon
- Load handling kit
- Mechanical quick coupler
- Multi-purpose, rock and heavy duty buckets with boom/bucket adjustment shims
- Northern countries kit
- Piping on booms for supplementary low flow function
- Shoes:
  - EL version - 600 - 700 mm
  - LC version - 700 - 800 - 900 mm
- Supplementary cab lights
- Supplementary low flow hydraulic function predisposition

**Note: standard and optional equipment may vary by country. Consult your NEW HOLLAND KOBELCO dealer for specific.**

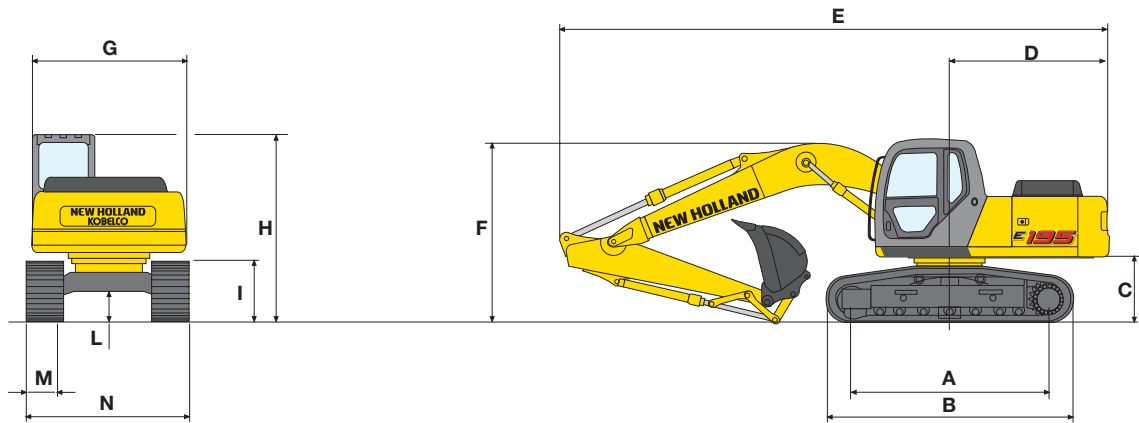
## BUCKETS

| SAE CAPACITY        | CECE HEAPED CAPACITY | WIDTH   | WEIGHT |
|---------------------|----------------------|---------|--------|
| 0.53 m <sup>3</sup> | 0.46 m <sup>3</sup>  | 750 mm  | 505 kg |
| 0.63 m <sup>3</sup> | 0.54 m <sup>3</sup>  | 850 mm  | 540 kg |
| 0.79 m <sup>3</sup> | 0.68 m <sup>3</sup>  | 1000 mm | 635 kg |
| 1.00 m <sup>3</sup> | 0.86 m <sup>3</sup>  | 1200 mm | 650 kg |
| 1.10 m <sup>3</sup> | 0.95 m <sup>3</sup>  | 1300 mm | 700 kg |

# E195

## MONOBLOC BOOM

### DIMENSIONS (mm) - OPERATING WEIGHTS

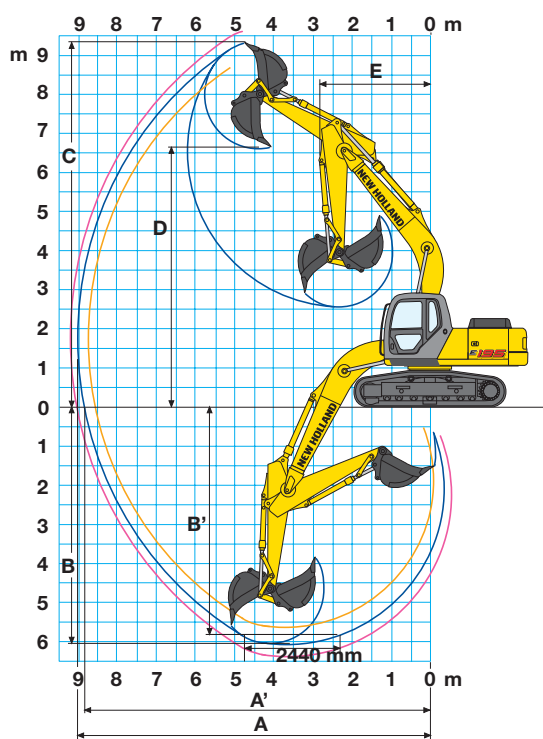


| Versions      | A    | B    | C    | D    | E(*)     | F(*)     | G    | H    | I   | L   |
|---------------|------|------|------|------|----------|----------|------|------|-----|-----|
|               |      |      |      |      | (1) 8860 | (1) 3030 |      |      |     |     |
| <b>E195EL</b> | 3370 | 4197 | 1083 | 2610 | (2) 8780 | (2) 2940 | 2490 | 2984 | 952 | 482 |
|               |      |      |      |      | (3) 8780 | (3) 3030 |      |      |     |     |
|               |      |      |      |      | (1) 8870 | (1) 3020 |      |      |     |     |
| <b>E195LC</b> | 3370 | 4197 | 1069 | 2610 | (2) 8780 | (2) 2920 | 2490 | 2970 | 952 | 468 |
|               |      |      |      |      | (3) 8780 | (3) 3030 |      |      |     |     |

(\*) Dipperstick: (1) 2200 mm, (2) 2600 mm, (3) 3100 mm

|                          |     | E195EL |       |       | E195LC |       |       |       |
|--------------------------|-----|--------|-------|-------|--------|-------|-------|-------|
| <b>M - Shoe width</b>    | mm  | 500    | 600   | 700   | 600    | 700   | 800   | 900   |
| <b>N - maximum width</b> | mm  | 2490   | 2590  | 2690  | 2800   | 2900  | 3000  | 3100  |
| <b>Operating weight</b>  | kg  | 18600  | 18730 | 18860 | 18940  | 19070 | 19200 | 19330 |
| <b>Ground pressure</b>   | bar | 0.55   | 0.46  | 0.40  | 0.47   | 0.40  | 0.36  | 0.32  |

## DIGGING PERFORMANCE



| DIPPERSTICK | mm | 2200 | 2600 | 3100 |
|-------------|----|------|------|------|
| A           | mm | 8692 | 9088 | 9601 |
| A'          | mm | 8499 | 8904 | 9427 |
| B           | mm | 5714 | 6115 | 6614 |
| B'          | mm | 5443 | 5885 | 6432 |
| C           | mm | 9073 | 9385 | 9785 |
| D           | mm | 6290 | 6531 | 6903 |
| E           | mm | 3041 | 2849 | 2881 |

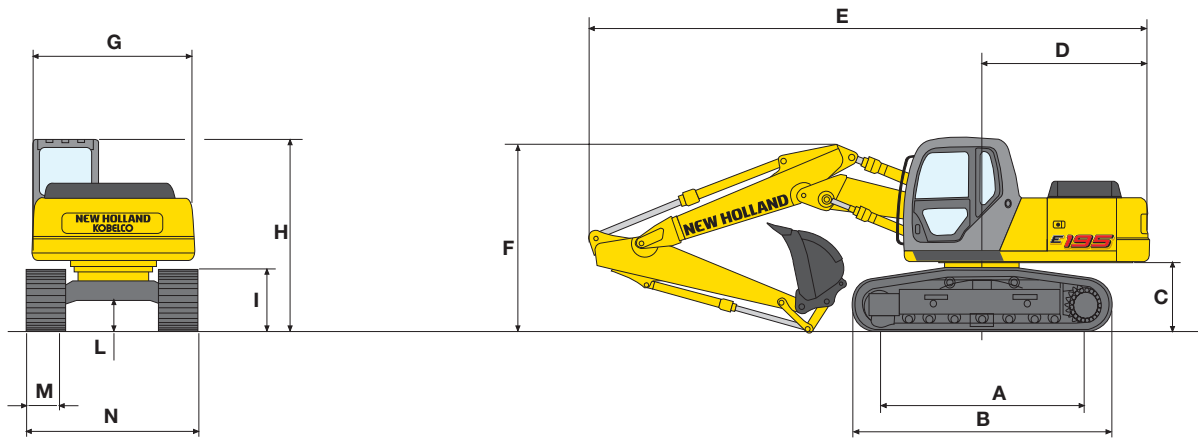
| BREAKOUT FORCE: |     |       |       |       |
|-----------------|-----|-------|-------|-------|
| BUCKET          | daN | 12600 | 12600 | 12600 |
| DIPPERSTICK     | daN | 11800 | 10000 | 8700  |

| WITH POWER BOOST ON |     |       |       |       |
|---------------------|-----|-------|-------|-------|
| BUCKET              | daN | 14000 | 14000 | 14000 |
| DIPPERSTICK         | daN | 13100 | 11000 | 9300  |

# E195

## TRIPLE ARTICULATION BOOM

### DIMENSIONS (mm) - OPERATING WEIGHTS

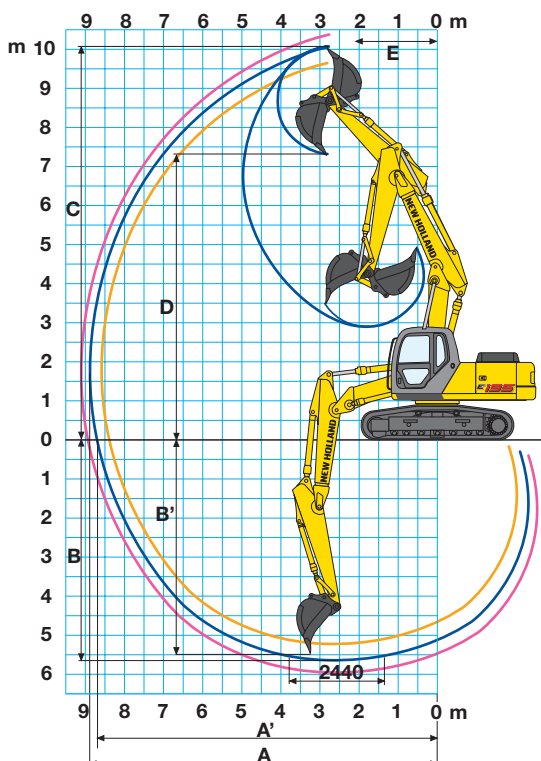


| Versions      | A    | B    | C    | D    | E(*)     | F(*)     | G    | H    | I   | L   |
|---------------|------|------|------|------|----------|----------|------|------|-----|-----|
|               |      |      |      |      | (1) 8710 | (1) 3050 |      |      |     |     |
| <b>E195EL</b> | 3370 | 4197 | 1083 | 2610 | (2) 8630 | (2) 2960 | 2490 | 2984 | 952 | 482 |
|               |      |      |      |      | (3) 8620 | (3) 3090 |      |      |     |     |
|               |      |      |      |      | (1) 8710 | (1) 3050 |      |      |     |     |
| <b>E195LC</b> | 3370 | 4197 | 1069 | 2610 | (2) 8630 | (2) 2960 | 2490 | 2970 | 952 | 468 |
|               |      |      |      |      | (3) 8620 | (3) 3090 |      |      |     |     |

(\*) Dipperstick: (1) 2200 mm, (2) 2600 mm, (3) 3100 mm

|                          |     | E195EL |       |       | E195LC |       |       |       |
|--------------------------|-----|--------|-------|-------|--------|-------|-------|-------|
| <b>M</b> - Shoe width    | mm  | 500    | 600   | 700   | 600    | 700   | 800   | 900   |
| <b>N</b> - maximum width | mm  | 2490   | 2590  | 2690  | 2800   | 2900  | 3000  | 3100  |
| <b>Operating weight</b>  | kg  | 19300  | 19430 | 19560 | 19640  | 19770 | 19900 | 20030 |
| <b>Ground pressure</b>   | bar | 0.57   | 0.48  | 0.41  | 0.49   | 0.42  | 0.37  | 0.33  |

## DIGGING PERFORMANCE



| DIPPERSTICK | mm | 2200 | 2600  | 3100  |
|-------------|----|------|-------|-------|
| <b>A</b>    | mm | 8565 | 8964  | 9487  |
| <b>A'</b>   | mm | 8370 | 8778  | 9303  |
| <b>B</b>    | mm | 5301 | 5709  | 6223  |
| <b>B'</b>   | mm | 5177 | 5593  | 6116  |
| <b>C</b>    | mm | 9816 | 10166 | 10629 |
| <b>D</b>    | mm | 6891 | 7240  | 7714  |
| <b>E</b>    | mm | 2410 | 2213  | 2299  |

### BREAKOUT FORCE:

|             |     |       |       |       |
|-------------|-----|-------|-------|-------|
| BUCKET      | daN | 12600 | 12600 | 12600 |
| DIPPERSTICK | daN | 11800 | 10000 | 8700  |

### WITH POWER BOOST ON

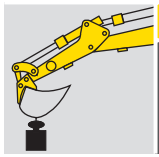
|             |     |       |       |       |
|-------------|-----|-------|-------|-------|
| BUCKET      | daN | 14000 | 14000 | 14000 |
| DIPPERSTICK | daN | 13100 | 11000 | 9300  |

# E195

## LIFTING CAPACITY

### EL version

VALUES ARE EXPRESSED IN TONNES

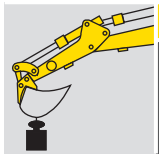


#### RADIUS OF LOAD

| 1.5m  |      | 3.0 m |      | 4.5 m |      | 6.0 m |      | 7.5 m |      | AT MAX. REACH |      | REACH<br>m |
|-------|------|-------|------|-------|------|-------|------|-------|------|---------------|------|------------|
| FRONT | SIDE | FRONT | SIDE | FRONT | SIDE | FRONT | SIDE | FRONT | SIDE | FRONT         | SIDE |            |

#### MONOBLOC DIPPERSTICK 2 200 mm

| HEIGHT | 1.5m   |        | 3.0 m  |       | 4.5 m |       | 6.0 m |      | 7.5 m |      | AT MAX. REACH |       | REACH<br>m |
|--------|--------|--------|--------|-------|-------|-------|-------|------|-------|------|---------------|-------|------------|
|        | FRONT  | SIDE   | FRONT  | SIDE  | FRONT | SIDE  | FRONT | SIDE | FRONT | SIDE | FRONT         | SIDE  |            |
| +9.0 m |        |        |        |       |       |       |       |      |       |      |               |       |            |
| +7.5 m |        |        |        |       |       |       |       |      |       |      |               |       |            |
| +6.0 m |        |        |        |       |       |       | 4.0 * | 3.7  |       |      | 3.9 *         | 3.5   | 6.13       |
| +4.5 m |        |        |        |       | 4.8 * | 4.8 * | 4.2 * | 3.6  |       |      | 3.9 *         | 2.8   | 6.94       |
| +3.0 m |        |        | 9.0 *  | 9.0 * | 5.9 * | 5.2   | 4.6 * | 3.4  |       |      | 4.1 *         | 2.5   | 7.36       |
| +1.5 m |        |        | 9.2 *  | 8.5   | 6.9 * | 4.8   | 5.1 * | 3.2  |       |      | 4.1 *         | 2.4   | 7.45       |
| 0      |        |        | 10.4 * | 8.3   | 7.3 * | 4.6   | 5.4 * | 3.1  |       |      | 4.2           | 2.4   | 7.23       |
| -1.5 m | 9.2 *  | 9.2 *  | 10.3 * | 8.4   | 7.1 * | 4.5   | 5.2 * | 3.1  |       |      | 4.6 *         | 2.7   | 6.67       |
| -3.0 m | 12.9 * | 12.9 * | 8.6 *  | 8.6   | 6.2 * | 4.6   |       |      |       |      | 4.7 *         | 3.4   | 5.66       |
| -4.5 m |        |        | 5.5 *  | 5.5 * |       |       |       |      |       |      | 4.5 *         | 4.5 * | 3.85       |

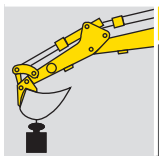


#### RADIUS OF LOAD

| 1.5m  |      | 3.0 m |      | 4.5 m |      | 6.0 m |      | 7.5 m |      | AT MAX. REACH |      | REACH<br>m |
|-------|------|-------|------|-------|------|-------|------|-------|------|---------------|------|------------|
| FRONT | SIDE | FRONT | SIDE | FRONT | SIDE | FRONT | SIDE | FRONT | SIDE | FRONT         | SIDE |            |

#### TRIPLE ARTICULATION DIPPERSTICK 2 200 mm

| HEIGHT | 1.5m  |      | 3.0 m  |       | 4.5 m |       | 6.0 m |      | 7.5 m |      | AT MAX. REACH |       | REACH<br>m |
|--------|-------|------|--------|-------|-------|-------|-------|------|-------|------|---------------|-------|------------|
|        | FRONT | SIDE | FRONT  | SIDE  | FRONT | SIDE  | FRONT | SIDE | FRONT | SIDE | FRONT         | SIDE  |            |
| +9.0 m |       |      |        |       |       |       |       |      |       |      |               |       |            |
| +7.5 m |       |      |        |       | 4.4 * | 4.4 * |       |      |       |      | 4.2 *         | 4.2 * | 4.60       |
| +6.0 m |       |      |        |       | 4.8 * | 4.8 * | 3.9 * | 3.7  |       |      | 3.9 *         | 3.7   | 6.03       |
| +4.5 m |       |      | 7.2 *  | 7.2 * | 5.2 * | 5.2 * | 4.0 * | 3.6  |       |      | 3.6 *         | 2.9   | 6.85       |
| +3.0 m |       |      | 10.5 * | 9.9   | 6.2 * | 5.3   | 4.4 * | 3.5  |       |      | 3.5 *         | 2.6   | 7.28       |
| +1.5 m |       |      | 10.2 * | 8.8   | 7.4 * | 4.9   | 4.8 * | 3.3  |       |      | 3.7 *         | 2.4   | 7.37       |
| 0      |       |      | 10.5 * | 8.5   | 7.3 * | 4.6   | 5.3 * | 3.1  |       |      | 4.0 *         | 2.5   | 7.15       |
| -1.5 m |       |      | 8.4 *  | 8.4   | 6.3 * | 4.5   | 4.6 * | 3.1  |       |      | 3.9 *         | 2.7   | 6.58       |
| -3.0 m |       |      | 5.5 *  | 5.5 * | 4.4 * | 4.4 * |       |      |       |      | 3.3 *         | 3.3 * | 5.55       |
| -4.5 m |       |      |        |       |       |       |       |      |       |      |               |       |            |



#### RADIUS OF LOAD

| 1.5m  |      | 3.0 m |      | 4.5 m |      | 6.0 m |      | 7.5 m |      | AT MAX. REACH |      | REACH<br>m |
|-------|------|-------|------|-------|------|-------|------|-------|------|---------------|------|------------|
| FRONT | SIDE | FRONT | SIDE | FRONT | SIDE | FRONT | SIDE | FRONT | SIDE | FRONT         | SIDE |            |

#### MONOBLOC DIPPERSTICK 2 600 mm

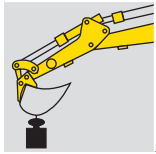
| HEIGHT | 1.5m   |        | 3.0 m  |       | 4.5 m |       | 6.0 m |       | 7.5 m |      | AT MAX. REACH |       | REACH<br>m |
|--------|--------|--------|--------|-------|-------|-------|-------|-------|-------|------|---------------|-------|------------|
|        | FRONT  | SIDE   | FRONT  | SIDE  | FRONT | SIDE  | FRONT | SIDE  | FRONT | SIDE | FRONT         | SIDE  |            |
| +9.0 m |        |        |        |       |       |       |       |       |       |      |               |       |            |
| +7.5 m |        |        |        |       |       |       |       |       |       |      | 2.7 *         | 2.7 * | 5.46       |
| +6.0 m |        |        |        |       |       |       | 3.6 * | 3.6 * |       |      | 2.5 *         | 2.5 * | 6.71       |
| +4.5 m |        |        |        |       |       |       | 3.9 * | 3.6   |       |      | 2.5 *         | 2.5   | 7.46       |
| +3.0 m |        |        | 8.0 *  | 8.0 * | 5.4 * | 5.3   | 4.4 * | 3.4   | 3.8 * | 2.4  | 2.7 *         | 2.2   | 7.84       |
| +1.5 m |        |        | 10.7 * | 8.7 * | 6.6 * | 4.9   | 4.9 * | 3.2   | 4.0 * | 2.3  | 2.9 *         | 2.1   | 7.93       |
| 0      |        |        | 10.4 * | 8.3   | 7.2 * | 4.6   | 5.3 * | 3.1   | 4.0   | 2.3  | 3.4 *         | 2.2   | 7.72       |
| -1.5 m | 7.9 *  | 7.9 *  | 10.7 * | 8.3   | 7.2 * | 4.5   | 5.3 * | 3.0   |       |      | 4.2           | 2.4   | 7.20       |
| -3.0 m | 11.3 * | 11.3 * | 9.3 *  | 8.4   | 6.5 * | 4.5   | 4.6 * | 3.1   |       |      | 4.3 *         | 2.9   | 6.28       |
| -4.5 m |        |        | 6.6 *  | 6.6 * | 4.6 * | 4.6 * |       |       |       |      | 4.3 *         | 4.3 * | 4.73       |

As per ISO 10567 with excavator equipped with bucket. The indicated load is no more than 87% of hydraulic system lifting capacity or 75% of static tipping load. Value marked with an asterisc are limited by the hydraulic system.

# LIFTING CAPACITY

EL version

VALUES ARE EXPRESSED IN TONNES

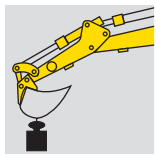


## RADIUS OF LOAD

| 1.5m  |      | 3.0 m |      | 4.5 m |      | 6.0 m |      | 7.5 m |      | AT MAX. REACH |      | REACH<br>m |
|-------|------|-------|------|-------|------|-------|------|-------|------|---------------|------|------------|
| FRONT | SIDE | FRONT | SIDE | FRONT | SIDE | FRONT | SIDE | FRONT | SIDE | FRONT         | SIDE |            |

### TRIPLE ARTICULATION DIPPERSTICK 2 600 mm

| HEIGHT | 1.5m  |       | 3.0 m  |       | 4.5 m |       | 6.0 m |       | 7.5 m |      | AT MAX. REACH |       | REACH<br>m |
|--------|-------|-------|--------|-------|-------|-------|-------|-------|-------|------|---------------|-------|------------|
|        | FRONT | SIDE  | FRONT  | SIDE  | FRONT | SIDE  | FRONT | SIDE  | FRONT | SIDE | FRONT         | SIDE  |            |
| +9.0 m |       |       |        |       |       |       |       |       |       |      |               |       |            |
| +7.5 m |       |       |        |       | 4.1 * | 4.1 * |       |       |       |      | 2.7 *         | 2.7 * | 5.35       |
| +6.0 m |       |       |        |       | 4.5 * | 4.5 * | 3.7 * | 3.7 * |       |      | 2.5 *         | 2.5 * | 6.62       |
| +4.5 m |       |       |        |       | 4.8 * | 4.8 * | 3.8 * | 3.7   |       |      | 2.5 *         | 2.5 * | 7.37       |
| +3.0 m |       |       | 9.7 *  | 9.7 * | 5.7 * | 5.4   | 4.1 * | 3.5   | 3.2 * | 2.4  | 2.6 *         | 2.3   | 7.77       |
| +1.5 m |       |       | 11.5 * | 9.0   | 7.2 * | 4.9   | 4.6 * | 3.3   | 3.4 * | 2.3  | 2.9 *         | 2.2   | 7.85       |
| 0      | 4.7 * | 4.7 * | 11.0 * | 8.5   | 7.3 * | 4.6   | 5.1 * | 3.1   | 3.6 * | 2.3  | 3.4 *         | 2.2   | 7.65       |
| -1.5 m | 8.1 * | 8.1 * | 9.2 *  | 8.2 * | 6.6 * | 4.4   | 4.8 * | 3.0   |       |      | 3.6 *         | 2.4   | 7.12       |
| -3.0 m |       |       | 6.6 *  | 6.6 * | 5.0 * | 4.4   | 3.4 * | 3.0   |       |      | 3.2 *         | 3.0   | 6.18       |
| -4.5 m |       |       |        |       |       |       |       |       |       |      |               |       |            |

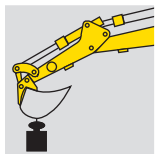


## RADIUS OF LOAD

| 1.5m  |      | 3.0 m |      | 4.5 m |      | 6.0 m |      | 7.5 m |      | AT MAX. REACH |      | REACH<br>m |
|-------|------|-------|------|-------|------|-------|------|-------|------|---------------|------|------------|
| FRONT | SIDE | FRONT | SIDE | FRONT | SIDE | FRONT | SIDE | FRONT | SIDE | FRONT         | SIDE |            |

### MONOBLOC DIPPERSTICK 3 100 mm

| HEIGHT | 1.5m   |        | 3.0 m  |      | 4.5 m |       | 6.0 m |       | 7.5 m |      | AT MAX. REACH |       | REACH<br>m |
|--------|--------|--------|--------|------|-------|-------|-------|-------|-------|------|---------------|-------|------------|
|        | FRONT  | SIDE   | FRONT  | SIDE | FRONT | SIDE  | FRONT | SIDE  | FRONT | SIDE | FRONT         | SIDE  |            |
| +9.0 m |        |        |        |      |       |       |       |       |       |      |               |       |            |
| +7.5 m |        |        |        |      |       |       | 2.4 * | 2.4 * |       |      | 1.9 *         | 1.9 * | 6.27       |
| +6.0 m |        |        |        |      |       |       | 3.2 * | 3.2 * |       |      | 1.8 *         | 1.8 * | 7.38       |
| +4.5 m |        |        |        |      |       |       | 3.5 * | 3.5 * | 3.1 * | 2.5  | 1.7 *         | 1.7 * | 8.06       |
| +3.0 m |        |        |        |      | 4.9 * | 4.9 * | 4.0 * | 3.5   | 3.6 * | 2.4  | 1.8 *         | 1.8 * | 8.42       |
| +1.5 m |        |        | 9.8 *  | 9.0  | 6.1 * | 4.9   | 4.6 * | 3.2   | 3.9 * | 2.3  | 2.0 *         | 1.9   | 8.50       |
| 0      | 4.3 *  | 4.3 *  | 10.5 * | 8.3  | 7.0 * | 4.6   | 5.1 * | 3.1   | 3.9   | 2.2  | 2.2 *         | 1.9   | 8.31       |
| -1.5 m | 6.8 *  | 6.8 *  | 11.0 * | 8.2  | 7.2 * | 4.4   | 5.2 * | 3.0   | 3.9   | 2.2  | 2.7 *         | 2.0   | 7.82       |
| -3.0 m | 9.6 *  | 9.6 *  | 9.9 *  | 8.2  | 6.7 * | 4.4   | 4.9 * | 3.0   |       |      | 3.7 *         | 2.4   | 6.95       |
| -4.5 m | 12.6 * | 12.6 * | 7.7 *  | 7.7  | 5.3 * | 4.6   |       |       |       |      | 3.9 *         | 3.3   | 5.64       |



## RADIUS OF LOAD

| 1.5m  |      | 3.0 m |      | 4.5 m |      | 6.0 m |      | 7.5 m |      | AT MAX. REACH |      | REACH<br>m |
|-------|------|-------|------|-------|------|-------|------|-------|------|---------------|------|------------|
| FRONT | SIDE | FRONT | SIDE | FRONT | SIDE | FRONT | SIDE | FRONT | SIDE | FRONT         | SIDE |            |

### TRIPLE ARTICULATION DIPPERSTICK 3 100 mm

| HEIGHT | 1.5m   |        | 3.0 m  |       | 4.5 m |       | 6.0 m |       | 7.5 m |      | AT MAX. REACH |       | REACH<br>m |
|--------|--------|--------|--------|-------|-------|-------|-------|-------|-------|------|---------------|-------|------------|
|        | FRONT  | SIDE   | FRONT  | SIDE  | FRONT | SIDE  | FRONT | SIDE  | FRONT | SIDE | FRONT         | SIDE  |            |
| +9.0 m |        |        |        |       |       |       |       |       |       |      | 2.3 *         | 2.3 * | 4.26       |
| +7.5 m |        |        |        |       |       |       | 2.2 * | 2.2 * |       |      | 1.9 *         | 1.9 * | 6.16       |
| +6.0 m |        |        |        |       |       |       | 3.4 * | 3.4 * |       |      | 1.8 *         | 1.8 * | 7.29       |
| +4.5 m |        |        |        |       | 4.5 * | 4.5 * | 3.6 * | 3.6 * | 2.9 * | 2.5  | 1.7 *         | 1.7 * | 7.98       |
| +3.0 m |        |        | 8.0 *  | 8.0 * | 5.2 * | 5.2 * | 3.8 * | 3.5   | 3.0 * | 2.4  | 1.8 *         | 1.8 * | 8.34       |
| +1.5 m |        |        | 11.0 * | 9.3   | 6.6 * | 5.0   | 4.3 * | 3.3   | 3.2 * | 2.3  | 1.9 *         | 1.9   | 8.43       |
| 0      | 4.3 *  | 4.3 *  | 11.3 * | 8.4   | 7.2 * | 4.6   | 4.8 * | 3.1   | 3.4 * | 2.2  | 2.2 *         | 1.9   | 8.23       |
| -1.5 m | 7.0 *  | 7.0 *  | 10.2 * | 8.1   | 6.8 * | 4.4   | 4.9 * | 2.9   | 3.5 * | 2.2  | 2.7 *         | 2.1   | 7.74       |
| -3.0 m | 10.1 * | 10.1 * | 7.6 *  | 7.6 * | 5.5 * | 4.3   | 3.9 * | 2.9   |       |      | 3.0 *         | 2.5   | 6.90       |
| -4.5 m |        |        | 4.1 *  | 4.1 * | 3.1 * | 3.1 * |       |       |       |      | 2.1 *         | 2.1 * | 5.53       |

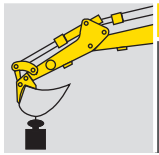
As per ISO 10567 with excavator equipped with bucket. The indicated load is no more than 87% of hydraulic system lifting capacity or 75% of static tipping load. Value marked with an asterisc are limited by the hydraulic system.

# E195

## LIFTING CAPACITY

### LC version

VALUES ARE EXPRESSED IN TONNES

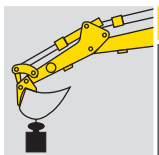


#### RADIUS OF LOAD

| 1.5m  |      | 3.0 m |      | 4.5 m |      | 6.0 m |      | 7.5 m |      | AT MAX. REACH |      | REACH<br>m |
|-------|------|-------|------|-------|------|-------|------|-------|------|---------------|------|------------|
| FRONT | SIDE | FRONT | SIDE | FRONT | SIDE | FRONT | SIDE | FRONT | SIDE | FRONT         | SIDE |            |

#### MONOBLOC DIPPERSTICK 2 200 mm

| HEIGHT | 1.5m   |        | 3.0 m  |       | 4.5 m |       | 6.0 m |       | 7.5 m |      | AT MAX. REACH |       | REACH<br>m |
|--------|--------|--------|--------|-------|-------|-------|-------|-------|-------|------|---------------|-------|------------|
|        | FRONT  | SIDE   | FRONT  | SIDE  | FRONT | SIDE  | FRONT | SIDE  | FRONT | SIDE | FRONT         | SIDE  |            |
| +9.0 m |        |        |        |       |       |       |       |       |       |      |               |       |            |
| +7.5 m |        |        |        |       |       |       |       |       |       |      |               |       |            |
| +6.0 m |        |        |        |       |       |       | 4.0 * | 4.0 * |       |      | 3.9 *         | 3.9 * | 6.13       |
| +4.5 m |        |        |        |       | 4.8 * | 4.8 * | 4.2 * | 4.0   |       |      | 3.9 *         | 3.2   | 6.94       |
| +3.0 m |        |        | 9.0 *  | 9.0 * | 5.9 * | 5.9 * | 4.6 * | 3.9   |       |      | 4.1 *         | 2.8   | 7.36       |
| +1.5 m |        |        | 9.2 *  | 9.2 * | 6.9 * | 5.5   | 5.3 * | 3.9   |       |      | 4.2           | 2.7   | 7.45       |
| 0      |        |        | 10.4 * | 9.8   | 7.3 * | 5.3   | 5.4 * | 3.5   |       |      | 4.3           | 2.7   | 7.23       |
| -1.5 m | 9.2 *  | 9.2 *  | 10.3 * | 9.8   | 7.1 * | 5.2   | 5.2 * | 3.5   |       |      | 4.6 *         | 3.0   | 6.67       |
| -3.0 m | 12.9 * | 12.9 * | 8.6 *  | 8.6 * | 6.2 * | 5.3   |       |       |       |      | 4.7 *         | 3.9   | 5.66       |
| -4.5 m |        |        | 5.5 *  | 5.5 * |       |       |       |       |       |      | 4.5 *         | 4.5 * | 3.85       |

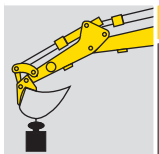


#### RADIUS OF LOAD

| 1.5m  |      | 3.0 m |      | 4.5 m |      | 6.0 m |      | 7.5 m |      | AT MAX. REACH |      | REACH<br>m |
|-------|------|-------|------|-------|------|-------|------|-------|------|---------------|------|------------|
| FRONT | SIDE | FRONT | SIDE | FRONT | SIDE | FRONT | SIDE | FRONT | SIDE | FRONT         | SIDE |            |

#### TRIPLE ARTICULATION DIPPERSTICK 2 200 mm

| HEIGHT | 1.5m  |      | 3.0 m  |        | 4.5 m |       | 6.0 m |       | 7.5 m |      | AT MAX. REACH |       | REACH<br>m |
|--------|-------|------|--------|--------|-------|-------|-------|-------|-------|------|---------------|-------|------------|
|        | FRONT | SIDE | FRONT  | SIDE   | FRONT | SIDE  | FRONT | SIDE  | FRONT | SIDE | FRONT         | SIDE  |            |
| +9.0 m |       |      |        |        |       |       |       |       |       |      |               |       |            |
| +7.5 m |       |      |        |        | 4.4 * | 4.4 * |       |       |       |      | 4.2 *         | 4.2 * | 4.60       |
| +6.0 m |       |      |        |        | 4.8 * | 4.8 * | 3.9 * | 3.9 * |       |      | 3.9 *         | 3.9 * | 6.03       |
| +4.5 m |       |      | 7.2 *  | 7.2 *  | 5.2 * | 5.2 * | 4.0 * | 4.0 * |       |      | 3.6 *         | 3.3   | 6.85       |
| +3.0 m |       |      | 10.5 * | 10.5 * | 6.2 * | 6.0   | 4.4 * | 3.9   |       |      | 3.5 *         | 2.9   | 7.28       |
| +1.5 m |       |      | 10.2 * | 10.2 * | 7.4 * | 5.6   | 4.8 * | 3.7   |       |      | 3.7 *         | 2.7   | 7.37       |
| 0      |       |      | 10.5 * | 10.0   | 7.3 * | 5.3   | 5.3 * | 3.6   |       |      | 4.0 *         | 2.8   | 7.15       |
| -1.5 m |       |      | 8.4 *  | 8.4 *  | 6.3 * | 5.2   | 4.6 * | 3.5   |       |      | 3.9 *         | 3.1   | 6.58       |
| -3.0 m |       |      | 5.5 *  | 5.5 *  | 4.4 * | 4.4 * |       |       |       |      | 3.3 *         | 3.3 * | 5.55       |
| -4.5 m |       |      |        |        |       |       |       |       |       |      |               |       |            |



#### RADIUS OF LOAD

| 1.5m  |      | 3.0 m |      | 4.5 m |      | 6.0 m |      | 7.5 m |      | AT MAX. REACH |      | REACH<br>m |
|-------|------|-------|------|-------|------|-------|------|-------|------|---------------|------|------------|
| FRONT | SIDE | FRONT | SIDE | FRONT | SIDE | FRONT | SIDE | FRONT | SIDE | FRONT         | SIDE |            |

#### MONOBLOC DIPPERSTICK 2 600 mm

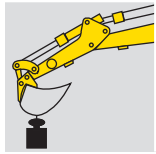
| HEIGHT | 1.5m   |        | 3.0 m  |       | 4.5 m |       | 6.0 m |       | 7.5 m |      | AT MAX. REACH |       | REACH<br>m |
|--------|--------|--------|--------|-------|-------|-------|-------|-------|-------|------|---------------|-------|------------|
|        | FRONT  | SIDE   | FRONT  | SIDE  | FRONT | SIDE  | FRONT | SIDE  | FRONT | SIDE | FRONT         | SIDE  |            |
| +9.0 m |        |        |        |       |       |       |       |       |       |      |               |       |            |
| +7.5 m |        |        |        |       |       |       |       |       |       |      | 2.7 *         | 2.7 * | 5.46       |
| +6.0 m |        |        |        |       |       |       | 3.6 * | 3.6 * |       |      | 2.5 *         | 2.5 * | 6.71       |
| +4.5 m |        |        |        |       |       |       | 3.9 * | 3.9 * |       |      | 2.5 *         | 2.5 * | 7.46       |
| +3.0 m |        |        | 8.0 *  | 8.0 * | 5.4 * | 5.4 * | 4.4 * | 3.9   | 3.8 * | 2.7  | 2.7 *         | 2.5   | 7.84       |
| +1.5 m |        |        | 10.7 * | 10.2  | 6.6 * | 5.6   | 4.9 * | 3.7   | 4.0 * | 2.6  | 2.9 *         | 2.4   | 7.93       |
| 0      |        |        | 10.4 * | 9.7   | 7.2 * | 5.3   | 5.3 * | 3.5   | 4.0   | 2.6  | 3.4 *         | 2.5   | 7.72       |
| -1.5 m | 7.9 *  | 7.9 *  | 10.7 * | 9.7   | 7.2 * | 5.2   | 5.3 * | 3.4   |       |      | 4.2           | 2.7   | 7.20       |
| -3.0 m | 11.3 * | 11.3 * | 9.3 *  | 9.3 * | 6.5 * | 5.2   | 4.6 * | 3.5   |       |      | 4.3 *         | 3.3   | 6.28       |
| -4.5 m |        |        | 6.6 *  | 6.6 * | 4.6 * | 4.6 * |       |       |       |      | 4.3 *         | 4.3 * | 4.73       |

As per ISO 10567 with excavator equipped with bucket. The indicated load is no more than 87% of hydraulic system lifting capacity or 75% of static tipping load. Value marked with an asterisk are limited by the hydraulic system.

# LIFTING CAPACITY

## LC version

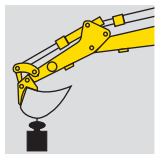
VALUES ARE EXPRESSED IN TONNES



| RADIUS OF LOAD |      |       |      |       |      |       |      |       |      |               |      |            |
|----------------|------|-------|------|-------|------|-------|------|-------|------|---------------|------|------------|
| 1.5m           |      | 3.0 m |      | 4.5 m |      | 6.0 m |      | 7.5 m |      | AT MAX. REACH |      | REACH<br>m |
| FRONT          | SIDE | FRONT | SIDE | FRONT | SIDE | FRONT | SIDE | FRONT | SIDE | FRONT         | SIDE |            |

### TRIPLE ARTICULATION DIPPERSTICK 2 600 mm

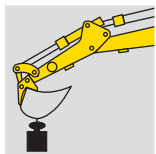
| HEIGHT | 1.5m  |       | 3.0 m  |       | 4.5 m |       | 6.0 m |       | 7.5 m |      | AT MAX. REACH |       | REACH<br>m |
|--------|-------|-------|--------|-------|-------|-------|-------|-------|-------|------|---------------|-------|------------|
|        | FRONT | SIDE  | FRONT  | SIDE  | FRONT | SIDE  | FRONT | SIDE  | FRONT | SIDE | FRONT         | SIDE  |            |
| +9.0 m |       |       |        |       |       |       |       |       |       |      |               |       |            |
| +7.5 m |       |       |        |       | 4.1 * | 4.1 * |       |       |       |      | 2.7 *         | 2.7 * | 5.35       |
| +6.0 m |       |       |        |       | 4.5 * | 4.5 * | 3.7 * | 3.7 * |       |      | 2.5 *         | 2.5 * | 6.62       |
| +4.5 m |       |       |        |       | 4.8 * | 4.8 * | 3.8 * | 3.8 * |       |      | 2.5 *         | 2.5 * | 7.37       |
| +3.0 m |       |       | 9.7 *  | 9.7 * | 5.7 * | 5.7 * | 4.1 * | 3.9   | 3.2 * | 2.7  | 2.6 *         | 2.6   | 7.77       |
| +1.5 m |       |       | 11.5 * | 10.5  | 7.2 * | 5.6   | 4.6 * | 3.7   | 3.4 * | 2.7  | 2.9 *         | 2.5   | 7.85       |
| 0      | 4.7 * | 4.7 * | 11.0 * | 9.9   | 7.3 * | 5.3   | 5.1 * | 3.5   | 3.6 * | 2.6  | 3.4 *         | 2.5   | 7.65       |
| -1.5 m | 8.1 * | 8.1 * | 9.2 *  | 9.2 * | 6.6 * | 5.1   | 4.8 * | 3.4   |       |      | 3.6 *         | 2.8   | 7.12       |
| -3.0 m |       |       | 6.6 *  | 6.6 * | 5.0 * | 5.0   | 3.4 * | 3.4 * |       |      | 3.2 *         | 3.2 * | 6.18       |
| -4.5 m |       |       |        |       |       |       |       |       |       |      |               |       |            |



| RADIUS OF LOAD |      |       |      |       |      |       |      |       |      |               |      |            |
|----------------|------|-------|------|-------|------|-------|------|-------|------|---------------|------|------------|
| 1.5m           |      | 3.0 m |      | 4.5 m |      | 6.0 m |      | 7.5 m |      | AT MAX. REACH |      | REACH<br>m |
| FRONT          | SIDE | FRONT | SIDE | FRONT | SIDE | FRONT | SIDE | FRONT | SIDE | FRONT         | SIDE |            |

### MONOBLOC DIPPERSTICK 3 100 mm

| HEIGHT | 1.5m   |        | 3.0 m  |       | 4.5 m |       | 6.0 m |       | 7.5 m |      | AT MAX. REACH |       | REACH<br>m |
|--------|--------|--------|--------|-------|-------|-------|-------|-------|-------|------|---------------|-------|------------|
|        | FRONT  | SIDE   | FRONT  | SIDE  | FRONT | SIDE  | FRONT | SIDE  | FRONT | SIDE | FRONT         | SIDE  |            |
| +9.0 m |        |        |        |       |       |       |       |       |       |      |               |       |            |
| +7.5 m |        |        |        |       |       |       | 2.4 * | 2.4 * |       |      | 1.9 *         | 1.9 * | 6.27       |
| +6.0 m |        |        |        |       |       |       | 3.2 * | 3.2 * |       |      | 1.8 *         | 1.8 * | 7.38       |
| +4.5 m |        |        |        |       |       |       | 3.5 * | 3.5 * | 3.1 * | 2.8  | 1.7 *         | 1.7 * | 8.06       |
| +3.0 m |        |        |        |       | 4.9 * | 4.9 * | 4.0 * | 3.9   | 3.6 * | 2.7  | 1.8 *         | 1.8 * | 8.42       |
| +1.5 m |        |        | 9.8 *  | 9.8 * | 6.1 * | 5.6   | 4.6 * | 3.7   | 3.9 * | 2.6  | 2.0 *         | 2.0 * | 8.50       |
| 0      | 4.3 *  | 4.3 *  | 10.5 * | 9.8   | 7.0 * | 5.3   | 5.1 * | 3.5   | 4.0   | 2.5  | 2.2 *         | 2.2   | 8.31       |
| -1.5 m | 6.8 *  | 6.8 *  | 11.0 * | 9.6   | 7.2 * | 5.1   | 5.2 * | 3.4   | 4.0   | 2.5  | 2.7 *         | 2.3   | 7.82       |
| -3.0 m | 9.6 *  | 9.6 *  | 9.9 *  | 9.7   | 6.7 * | 5.1   | 4.9 * | 3.4   |       |      | 3.7 *         | 2.8   | 6.95       |
| -4.5 m | 12.6 * | 12.6 * | 7.7 *  | 7.7 * | 5.3 * | 5.2   |       |       |       |      | 3.9 *         | 3.8   | 5.64       |



| RADIUS OF LOAD |      |       |      |       |      |       |      |       |      |               |      |            |
|----------------|------|-------|------|-------|------|-------|------|-------|------|---------------|------|------------|
| 1.5m           |      | 3.0 m |      | 4.5 m |      | 6.0 m |      | 7.5 m |      | AT MAX. REACH |      | REACH<br>m |
| FRONT          | SIDE | FRONT | SIDE | FRONT | SIDE | FRONT | SIDE | FRONT | SIDE | FRONT         | SIDE |            |

### TRIPLE ARTICULATION DIPPERSTICK 3 100 mm

| HEIGHT | 1.5m   |        | 3.0 m  |       | 4.5 m |       | 6.0 m |       | 7.5 m |      | AT MAX. REACH |       | REACH<br>m |
|--------|--------|--------|--------|-------|-------|-------|-------|-------|-------|------|---------------|-------|------------|
|        | FRONT  | SIDE   | FRONT  | SIDE  | FRONT | SIDE  | FRONT | SIDE  | FRONT | SIDE | FRONT         | SIDE  |            |
| +9.0 m |        |        |        |       |       |       |       |       |       |      | 2.3 *         | 2.3 * | 4.26       |
| +7.5 m |        |        |        |       |       |       | 2.2 * | 2.2 * |       |      | 1.9 *         | 1.9 * | 6.16       |
| +6.0 m |        |        |        |       |       |       | 3.4 * | 3.4 * |       |      | 1.8 *         | 1.8 * | 7.29       |
| +4.5 m |        |        |        |       | 4.5 * | 4.5 * | 3.6 * | 3.6 * | 2.9 * | 2.9  | 1.7 *         | 1.7 * | 7.98       |
| +3.0 m |        |        | 8.0 *  | 8.0 * | 5.2 * | 5.2 * | 3.8 * | 3.8 * | 3.0 * | 2.8  | 1.8 *         | 1.8 * | 8.34       |
| +1.5 m |        |        | 11.0 * | 10.8  | 6.6 * | 5.7   | 4.3 * | 3.7   | 3.2 * | 2.6  | 1.9 *         | 1.9 * | 8.43       |
| 0      | 4.3 *  | 4.3 *  | 11.3 * | 9.9   | 7.2 * | 5.3   | 4.8 * | 3.5   | 3.4 * | 2.5  | 2.2 *         | 2.2 * | 8.23       |
| -1.5 m | 7.0 *  | 7.0 *  | 10.2 * | 9.5   | 6.8 * | 5.0   | 4.9 * | 3.3   | 3.5 * | 2.5  | 2.7 *         | 2.4   | 7.74       |
| -3.0 m | 10.1 * | 10.1 * | 7.6 *  | 7.6 * | 5.5 * | 5.0   | 3.9 * | 3.3   |       |      | 3.0 *         | 2.8   | 6.90       |
| -4.5 m |        |        | 4.1 *  | 4.1 * | 3.1 * | 3.1 * |       |       |       |      | 2.1 *         | 2.1 * | 5.53       |

As per ISO 10567 with excavator equipped with bucket. The indicated load is no more than 87% of hydraulic system lifting capacity or 75% of static tipping load. Value marked with an asterisk are limited by the hydraulic system.



# PARTS & SERVICE

**T**he New Holland dealer network is, in itself, the best guarantee of continued productivity for the machines it delivers to its customers. New Holland service technicians are fully equipped to resolve all maintenance and repair issues, with each and every service point providing the high standards they are obliged to observe under New Holland's stringent quality guidelines.

The New Holland global parts network ensures fast, reliable, replacement parts for less downtime, increased productivity and, of course, profitable operation for its customers.

## AT YOUR OWN DEALERSHIP

The information contained in this brochure is intended to be a general nature only. The NEW HOLLAND KOBELCO CONSTRUCTION MACHINERY S.p.A. company may at any time and from time to time, for technical or other necessary reasons, modify any of the details or specifications of the product described in this brochure. Illustrations do not necessarily show products in standard conditions. The dimensions, weights and capacities shown herein, as well as any conversion data used, are approximate only and are subject to variations within normal manufacturing techniques.

Published by NEW HOLLAND KOBELCO CONSTRUCTION MACHINERY S.p.A. - [www.newholland.com](http://www.newholland.com)  
Printed in Italy - LEADER Firenze - Cod. 73301431 - INB - Printed 02/05



A product of the global alliance between CNH and KOBELCO



NEW HOLLAND IS A BRAND OF CNH.  
CNH: THE TOTAL SOLUTIONS CHOICE FOR YOUR SPECIFIC BUSINESS NEEDS.