

 **NEW HOLLAND**

MH4.6



NET FLYWHEEL POWER 87 kW - 118 hp

OPERATING WEIGHT 16 000 kg

BUCKET CAPACITY 0.23 - 0.74 m³

 **NEW HOLLAND**

PROVEN PERFORMANCE

MH4.6

- EVOLUTION IN TECHNOLOGY
- EVOLUTION IN PRODUCTIVITY AND CONSUMPTION
- EVOLUTION IN COMFORT AND SAFETY
- EVOLUTION IN ACCESSIBILITY AND SERVICE
- EVOLUTION IN EQUIPMENT AND VERSATILITY



■ HYDRAULIC SYSTEM

The **NHLS** (New Holland Load Sensing) hydraulic system ensures perfectly simultaneous movements, maximum controllability and reduced cycle times. 17% more operating pressure means 11% more digging performance and 28% more gradeability. The NH patent anti-drop valves supplied as **STANDARD** equipment ensure perfect implement and manipulator synchronisation for top controllability and efficiency.

■ MAINTENANCE AND SERVICEABILITY

Maximum accessibility to radiator and hydraulic pump compartments with easy to open seagull wing side panels provided with small compressed air control cylinders. Inside easy to reach engine oil and fuel filters, windscreen washer tank and pressure control PTOs grouped together for:

- reduced machine downtime
- lower maintenance costs



■ **MULTI-FUNCTION MONITOR**

Located in an ergonomic position and easy to read, it features five different languages to display information on maintenance programmes and malfunction warnings.

■ **SPACE VIEW CAB**

Excellent all-round visibility thanks to the wide glass area, transparent roof and parallelogram type windscreen wiper: all supplied as standard equipment besides the rain protection. Its structure is designed and tested for installing an optional front grid along with a FOPS top protection. For maximum operator comfort, standard equipment also includes: anti-theft device, heated and mechanically suspended (air suspended optional) seat, electrically adjustable consoles and automatic air conditioner.

SPECIFICATIONS

6



TIER 2 EMISSIONED ENGINE

Net flywheel power (ISO 14396)87 kW/118 hp
 Rated rpm2000
 Make and modelCNH F4BE0484E*D601
 Typediesel, 4-stroke, direct injection, turbocharged with aftercooler
 Displacement3.9 l
 Number of cylinders.....4
 Bore and stroke.....102 x 120 mm
Remote location engine oil and fuel filters for easy replacement
Electronic engine rpm control
Auto-Idling selector returns engine to minimum rpm when all controls are in neutral position
Engine rpm storage device
Electronic theft control device supplied as standard equipment
-15 ° external temperature start as standard equipment (-25° optional)
The engine conforms to 97/68/CE STAGE 2 Standards



ELECTRICAL SYSTEM

Voltage.....24 V
 Standard maintenance-free batteries.....2
 Capacity100 Ah
 Alternator.....70 A
 Starter motor.....4 kW



HYDRAULIC SYSTEM

S.H.S. (Smart Hydraulic System) for perfect controllability and simultaneity of all movements
A.I. (Artificial Intelligence) on-board computer
A.P.S. (Automatic Priority System) device
E.S.S.C. (Engine Speed Sensing Control) device for total installed hydraulic power exploitation
S.P.C. (Swing Pressure Control) for outstanding controllability and high operator comfort in superstructure acceleration/stop.
F.P.S. (Flow Pump Saving) and S.L.S. (Shock Less System) circuits to minimise oil at discharge and ensure perfectly homogeneous movements.
High definition E.T.U. (Easy To Use) multi-function monitor incorporating:
 - clock
 - maintenance programme
 - self diagnosis system
 - travel speed
 - engine rpm
Two directional crusher/hammer system supplied as standard equipment
Independent hammer/positioning cylinder control on the triple articulation version.

Main pump - maximum delivery:
 Equipment/travel182 l/min
 Swing.....90 l/min
 Maximum operating pressure:
 Equipment/travel35 MPa
 Swing20 MPa
 Hydraulic cylinders.....double effect
 - lift2
 bore x stroke105 x 980 mm
 - dipperstick.....1
 bore x stroke110 x 1140 mm
 - bucket.....1
 bore x stroke90 x 995 mm
 - positioning (only triple articulation).....1
 bore x stroke145 x 730 mm
 Cylinders with hydraulic travel stop for reduced implement stress and improved operator comfort.



TRANSMISSION

Automatic or manual control with variable displacement hydraulic motor and 2-speed (work and travel) synchronised gearbox for fast shifting with the excavator on the move. Consensus for shifting from travel to work speed is monitored by the on-board computer to ensure maximum operator safety and comfort. A lever may select low travel speeds. The transmission is provided with a **T.D.C. (Travel motor Displacement Control)** device to minimise service brake use in downhill travel.

Speed range		km/h	Maximum gradeability (%)
Work:	fast	0 ÷ 8.8	80
	slow	0 ÷ 3.5	
Travel:	fast	0 ÷ 34.5	15
	slow	0 ÷ 13.6	

Creep speed (optional): 0 ÷ 1.7 km/h for maximum hydraulic pump delivery at low travel speed.



SWING

Swing motor.....axial piston type
 Swing brake.....oil bath disc type automatically applied and hydraulically released
 Final drive.....oil bath planetary reduction
 Circlegrease bath
 Swing speed.....8.0 rpm



AXLES

Axles with oil bath disc brakes mounted directly on the wheel hubs.
 Rigid rear axle.
 Oscillating front axle: oscillation:..... ±7°
 The front axle can be locked hydraulically in any position; safety valves lock the axle in case of breakdowns.



BRAKING SYSTEM

Service brakes: oil bath disc type acting on all four wheels.
Work brake: acts on service brakes and locks front axle oscillation.
Parking brake: spring type mechanical acting on the transmission.
Emergency brake: double braking circuit and automatic parking brake actuation with the engine shut down.



STEERING SYSTEM

TypeORBITROL with safety valves
 Pumpgear type
 Double rod cylinder.....one, double effect
 Steering with engine shut down and excavator on the move.
 Steering radius.....27°
 Minimum steering diameter with twin tyres12100 mm



TYRES

Twin tyres10.00 - 20
 Single tyres18 - 19.5
 600/40 - 22.5



CAPACITIES

Engine litres
 Lube oil.....12.5
 Antifreeze.....24.0
 Fuel250.0
 Hydraulic system.....200.0

STANDARD EQUIPMENT

- 24 V electrical system, with 12 V socket in the cab
- Air filter dry type with cyclone pre-filter
- Anti-drop valves, with integrated spool for lifting and Dipperstick cylinder
- Auto-Idling device
- Batteries maintenance-free
- Cab lights
- Cab with transparent roof, rain protection, front and upper sunblind, parallelogram type windshield wiper
- Cell phone holder
- Centralised boom lubrication
- Centralised pressure control PTOs
- Clamshell bucket rotation predisposition
- Consoles electrically adjustable
- Cylinders with hydraulic travel end device
- E.T.U. (Easy To Use) multi function monitor
- Electric fuel pump
- Electronic accelerator with engine rpm data storage push button
- Electronic anti-theft device immobilizer
- Grease bath circle
- Heated mechanical suspension seat
- Horn
- Hydrostatic transmission with automatic or manual gearshift control
- Left step
- Lift hook on bucket lever
- "Load Sensing" hydraulic system with hydraulic power electronic control
- Mechanical lock/unlock brake pedal
- Monobloc or triple articulation boom
- Multi-function manipulators
- Oil bath disc brakes in wheel hubs
- Operator compartment with automatic conditioner
- Pedal control hammer/crusher predisposition
- Radio set with loudspeakers
- Remote location engine oil/fuel filters
- Right step with toolbox
- Road travel approval
- Slewing motor with automatic disc brakes
- Travel motor guard predisposition
- Twin tyres 10.00 - 20

OPTIONAL EQUIPMENT

- 2100 mm Dipperstick
- 2500 mm Dipperstick
- 3000 mm Dipperstick
- 600/40 - 22.5 single tyres
- Additional spool on main control valve
- Biodegradable oil
- Blade guard
- Cab with front grid and FOPS top protection
- Clamshell bucket piping
- Clamshell bucket support
- Cold start kit (-25° C)
- Creeper speed 1.7 km/h
- Equipment types:
 - Front and rear stabilisers
 - Front blade and rear stabilisers
 - Rear blade
 - Rear stabilisers
- Gearbox guard
- Hammer/crusher piping
- Heated air suspension seat
- Hydraulic quick coupler predisposition
- Left step with toolbox
- Multipurpose buckets

Note: standard and optional equipment may vary by country. Consult your NEW HOLLAND dealer for specific details.

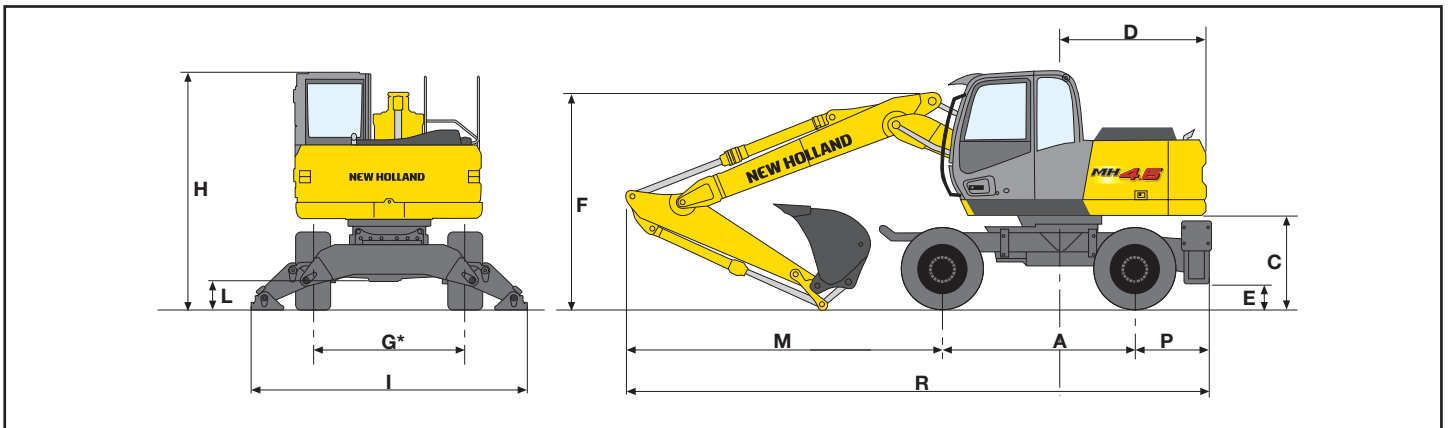
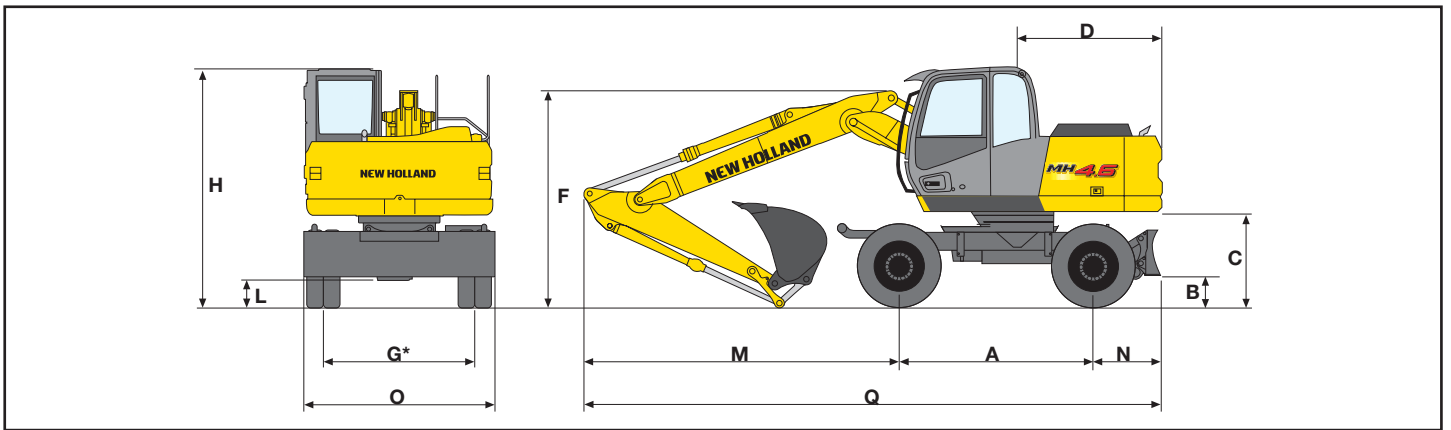
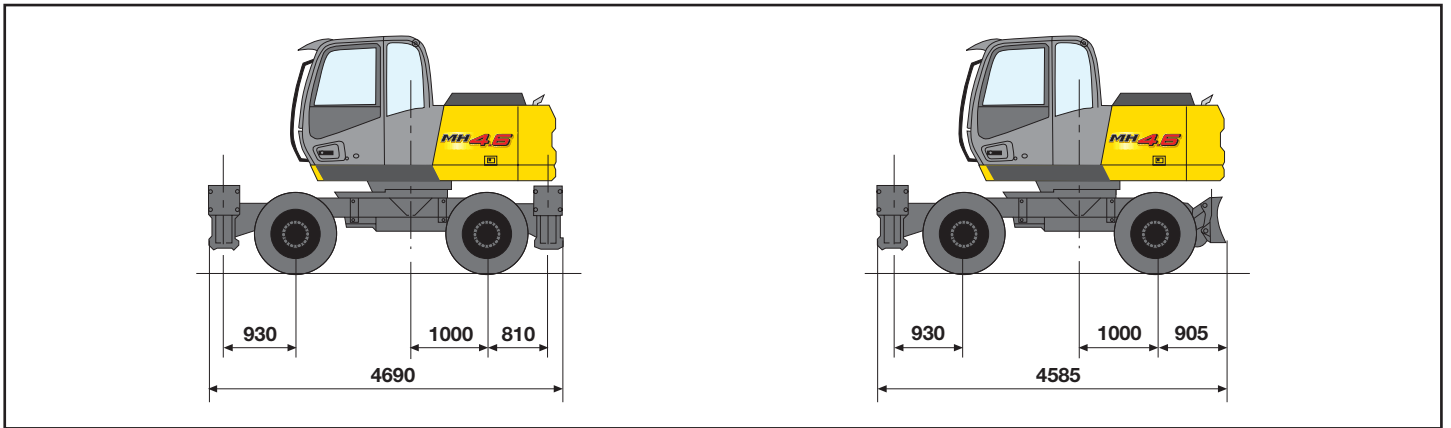
BUCKETS

SAE CAPACITY	CECE HEAPED CAPACITY	WIDTH	WEIGHT
0.23 m ³	0.21 m ³	500 mm	230 kg
0.41 m ³	0.37 m ³	750 mm	270 kg
0.48 m ³	0.43 m ³	850 mm	300 kg
0.52 m ³	0.47 m ³	900 mm	340 kg
0.59 m ³	0.54 m ³	1000 mm	400 kg
0.74 m ³	0.67 m ³	1200 mm	450 kg

MH4.6 TRIPLE ARTICULATION BOOM

Equipped with twin tyres 10.00 - 20

DIMENSIONS (mm)



DIPPERSTICK	A	B	C	D	E	F	G*	H	I	L	M	N	O	P	Q	R
2100(1)	2550	395	1205	1945	305	2855	1975	3110	3660	325	4185	905	2530	1010	7635	7740
2500 (2)	2550	395	1205	1945	305	2830	1975	3110	3660	325	4265	905	2530	1010	7720	7825
3000	2550	395	1205	1945	305	3325	1975	3110	3660	325	4090	905	2530	1010	7545	7650

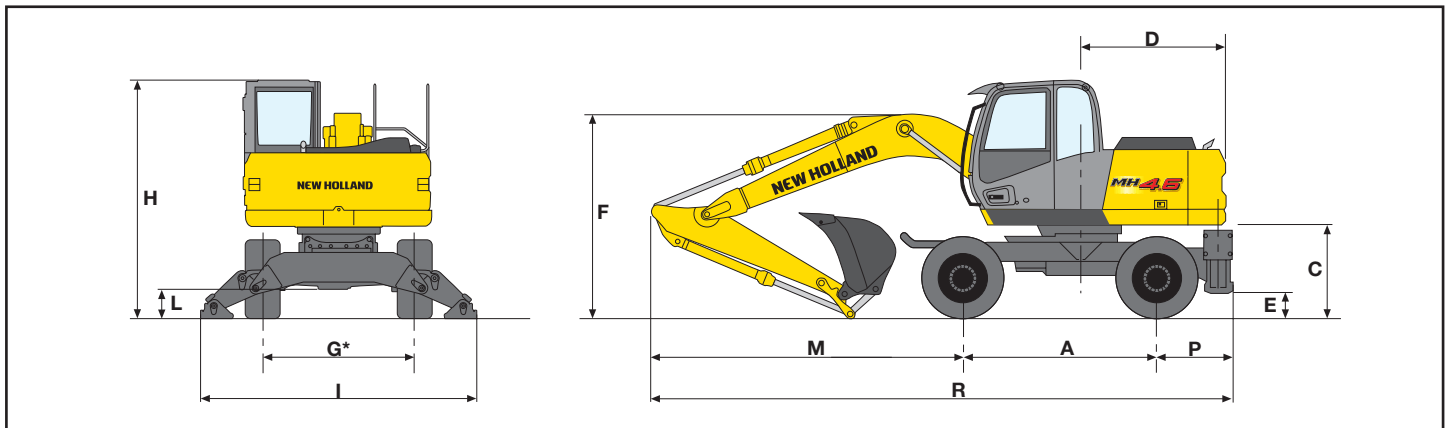
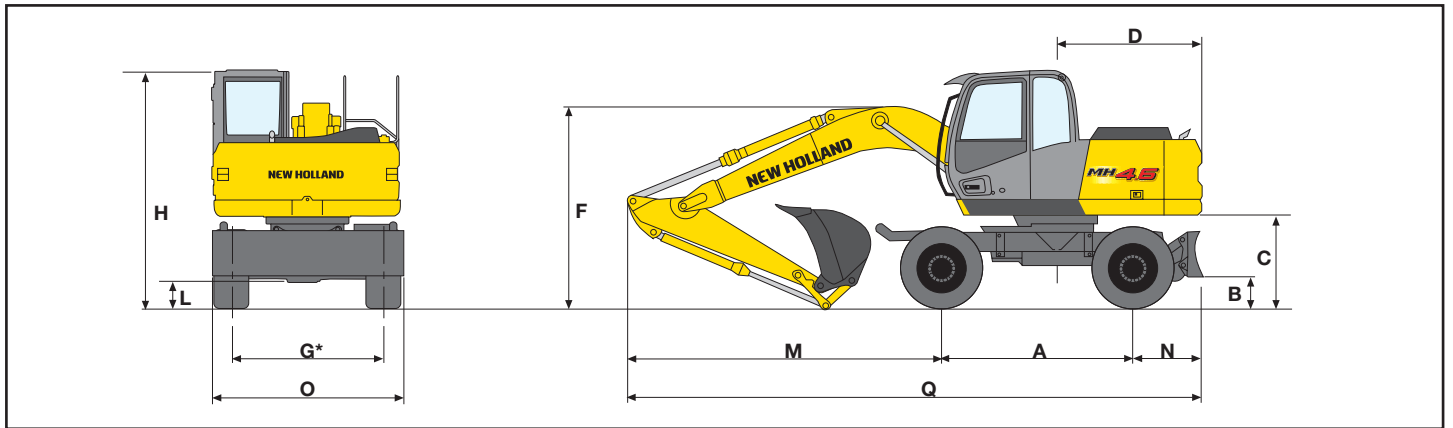
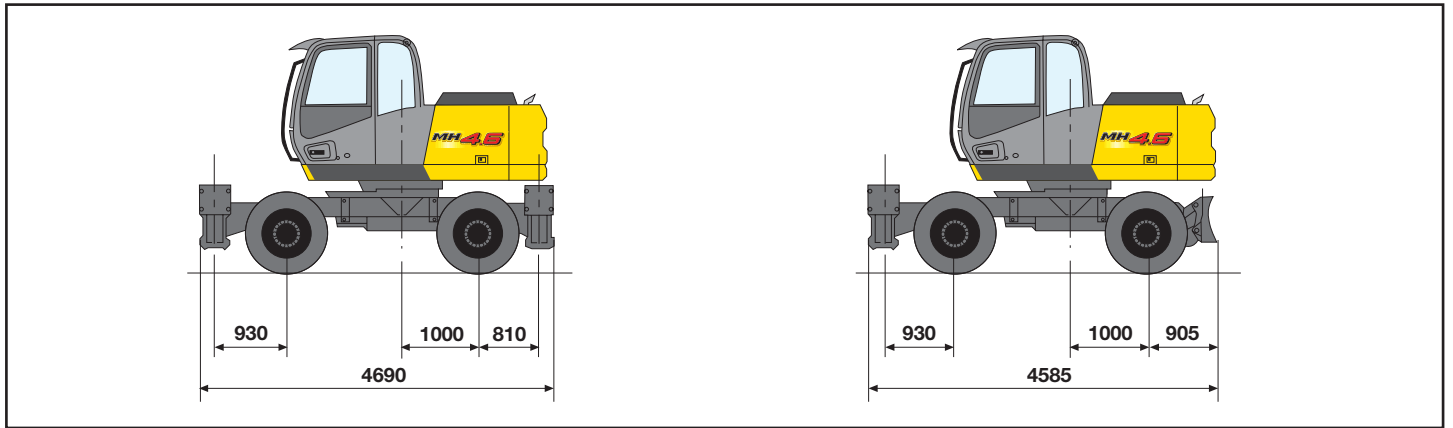
(1) (2) Booms approved for unescorted road travel

* With single tyres 18R 19.5 XFTL:2000 mm
600/40 - 22.5:1950 mm

MONOBLOC BOOM

Equipped with single tyres 18 - 19.5

DIMENSIONS (mm)



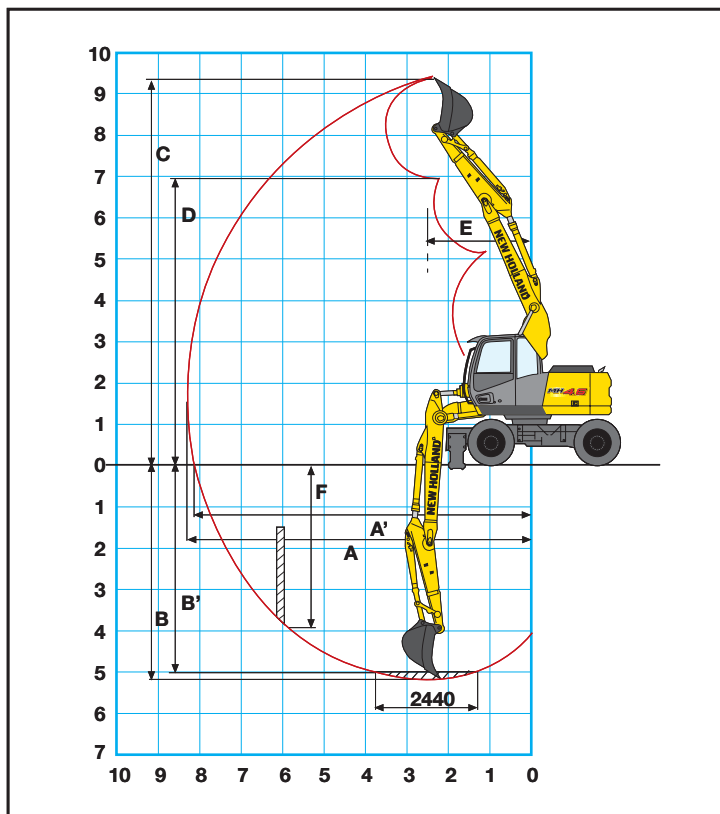
DIPPERSTICK	A	B	C	D	E	F	G*	H	I	L	M	N	O	P	Q	R
2100	2550	415	1225	1945	325	2690	2000	3130	3645	350	4135	905	2530	1010	7590	7695
2500	2550	415	1225	1945	325	3160	2000	3130	3645	350	4040	905	2530	1010	7495	7600
3000	2550	415	1225	1945	325	3570	2000	3130	3645	350	3845	905	2530	1010	7300	7405

* With twin tyres 10.00 - 20:1975 mm
 With single tyres 600/40 - 22.5:1950 mm

MH4.6

TRIPLE ARTICULATION BOOM

DIGGING PERFORMANCE



DIPPERSTICK	mm	2100	2500	3000
A	mm	8310	8665	9160
A'	mm	8125	8490	8995
B	mm	5180	5565	6065
B'	mm	4990	5385	5900
C	mm	9360	9640	10080
D	mm	6915	7195	7635
E	mm	2490	2660	3015
F	mm	3945	4435	4945

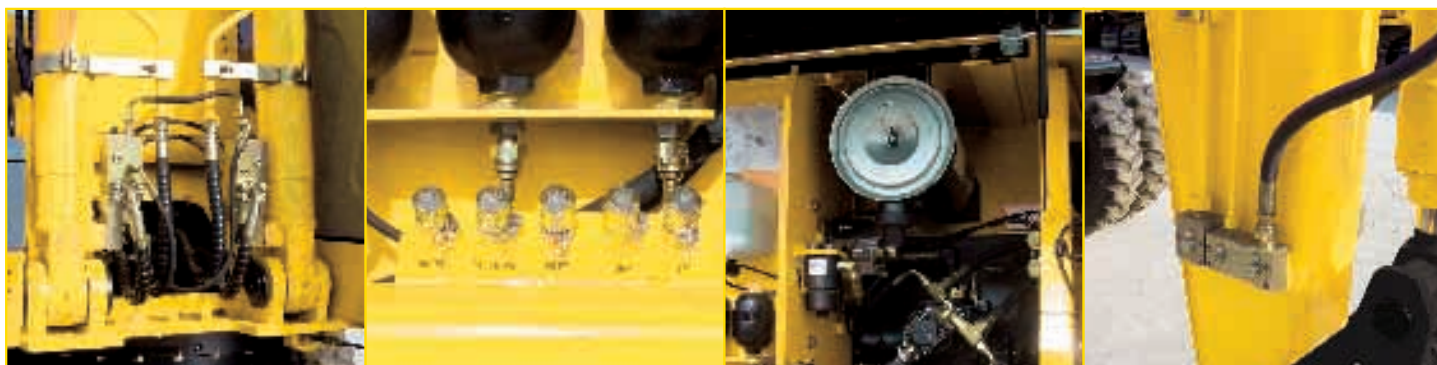
BREAKOUT FORCE:				
BUCKET	kg	8700	8700	8700
DIPPERSTICK	kg	8200	6500	5700

* Booms approved for unescorted road travel

OPERATING WEIGHTS

Equipped with twin tyres 10.00 - 20

DIPPERSTICK (mm)	2 STABILISERS FRONT OR REAR (kg)	4 STABILISERS (kg)	BLADE FRONT OR REAR (kg)	BLADE AND 2 STABILISERS (kg)
2100	14800	15900	14400	15500
2500	14850	15950	14450	15550
3000	14900	16000	14500	15600



■ **NEW HOLLAND PATENT ANTI-DROP VALVES** supplied standard

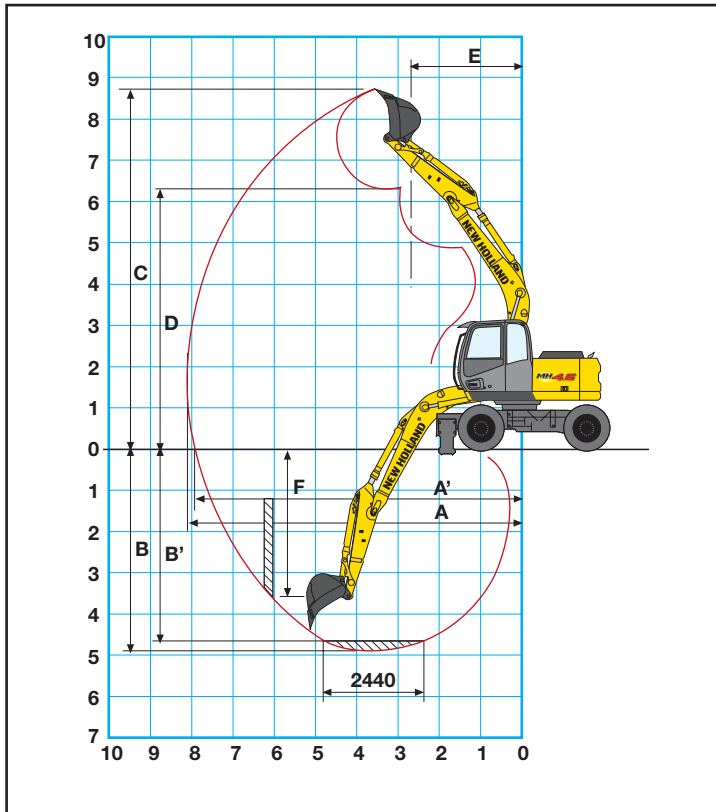
■ **PRESSURE PTOS** collected together and reachable from ground level

■ **NHLS (NEW HOLLAND LOAD SENSING) HYDRAULIC SYSTEM.** One pump electronically controlled.

■ **COKS INTEGRATED** into connection blocks

MONOBLOC BOOM

DIGGING PERFORMANCE



DIPPERSTICK	mm	2100	2500	3000
A	mm	8110	8460	8950
A'	mm	7925	8280	8785
B	mm	4885	5285	5785
B'	mm	4645	5070	5605
C	mm	8730	8950	9335
D	mm	6360	6555	6935
E	mm	2665	2755	3025
F	mm	3600	4125	4690

BREAKOUT FORCE:				
BUCKET	kg	8700	8700	8700
DIPPERSTICK	kg	8200	6500	5700

OPERATING WEIGHTS

Equipped with twin tyres 10.00 - 20

DIPPERSTICK (mm)	2 STABILISERS FRONT OR REAR (kg)	4 STABILISERS (kg)	BLADE FRONT OR REAR (kg)	BLADE AND 2 STABILISERS (kg)
2100	14250	15350	13850	14950
2500	14300	15400	13900	15000
3000	14350	15450	13950	15050



■ PARALLELOGRAM BLADE with two vertical cylinders



■ Easy to read MULTI-FUNCTION MONITOR located in an ergonomic position



■ AUTOMATIC CONDITIONING Standard



■ CYCLONE PRE-FILTRE Standard

MH46

TRIPLE ARTICULATION - LIFTING CAPACITY

BLADE

VALUE ARE EXPRESSED IN TONNES

DIPPERSTICK: 2100 mm

BLADE REAR / UP

HEIGHT	REACH												
	1.5 m		3.0 m		4.5 m		6.0 m		7.5 m		Front	Side	Max Reach
	Front	Side	Front	Side	Front	Side	Front	Side	Front	Side			
+7.5m											2.7*	2.7*	4.2
+6.0m					3.8*	3.8					2.3*	2.3*	5.8
+4.5m			4.3*	4.3*	4.0*	3.7	3.1*	2.3			2.2*	1.9	6.7
+3.0m			7.3*	6.2	4.4*	3.4	3.2*	2.2			2.3*	1.6	7.2
+1.5m			5.9*	5.3	5.2*	3.1	3.5*	2.1			2.5*	1.5	7.3
0m			6.5*	5.1	5.4	2.9	3.5	2.0			2.8	1.5	7.1
-1.5m			8.2*	5.1	5.4	2.8	3.5	1.9			3.1	1.7	6.6
-3.0m			6.2*	5.2	4.4*	2.9					3.3*	2.2	5.5
-4.5m													

BLADE REAR / DOWN

HEIGHT	REACH												
	1.5 m		3.0 m		4.5 m		6.0 m		7.5 m		Front	Side	Max Reach
	Front	Side	Front	Side	Front	Side	Front	Side	Front	Side			
+7.5m											2.7*	2.7*	4.2
+6.0m					3.8*	3.8*					2.3*	2.3*	5.8
+4.5m			4.3*	4.3*	4.0*	4.0*	3.1*	2.7			2.2*	2.2	6.7
+3.0m			7.3*	7.3*	4.4*	3.9	3.2*	2.5			2.3*	1.9	7.2
+1.5m			5.9*	5.9*	5.2*	3.6	3.5*	2.4			2.5*	1.8	7.3
0m			6.5*	6.1	6.1*	3.4	3.8*	2.3			2.9*	1.8	7.1
-1.5m			8.2*	6.1	5.7*	3.2	4.0*	2.2			3.5*	2.0	6.5
-3.0m			6.2*	6.2*	4.4*	3.4					3.3*	2.6	5.5
-4.5m													

DIPPERSTICK: 2500 mm

BLADE REAR / UP

HEIGHT	REACH												
	1.5 m		3.0 m		4.5 m		6.0 m		7.5 m		Front	Side	Max Reach
	Front	Side	Front	Side	Front	Side	Front	Side	Front	Side			
+7.5m					2.8*	2.8*					2.2*	2.2*	4.9
+6.0m					3.3*	3.3*	2.6*	2.4			2.0*	2.0*	6.3
+4.5m					3.7*	3.7*	3.0*	2.4			1.9*	1.7	7.1
+3.0m			6.5*	6.4	4.2*	3.4	3.1*	2.2	2.3*	1.6	1.9*	1.5	7.6
+1.5m			8.4*	5.5	4.9*	3.1	3.4*	2.1	2.6*	1.5	2.1*	1.4	7.7
0m			6.8*	5.1	5.5	2.9	3.5	2.0	2.5*	1.5	2.4*	1.4	7.5
-1.5m	5.2*	5.2*	8.7*	5.0	5.4	2.8	3.5	1.9			2.8	1.6	7.0
-3.0m			6.9*	5.1	4.9*	2.8	3.2*	1.9			3.2*	1.9	6.0
-4.5m													

BLADE REAR / DOWN

HEIGHT	REACH												
	1.5 m		3.0 m		4.5 m		6.0 m		7.5 m		Front	Side	Max Reach
	Front	Side	Front	Side	Front	Side	Front	Side	Front	Side			
+7.5m					2.8*	2.8*					2.2*	2.2*	4.9
+6.0m					3.3*	3.3*	2.6*	2.6*			2.0*	2.0*	6.3
+4.5m					3.7*	3.7*	3.0*	2.7			1.9*	1.9*	7.1
+3.0m			6.5*	6.5*	4.2*	4.0	3.1*	2.6	2.3*	1.8	1.9*	1.7	7.6
+1.5m			8.4*	6.6	4.9*	3.6	3.4*	2.4	2.6*	1.7	2.1*	1.6	7.7
0m			6.8*	6.2	5.9*	3.4	3.7*	2.3	2.5*	1.7	2.4*	1.7	7.5
-1.5m	5.2*	5.2*	8.7*	6.1	5.8*	3.3	4.0*	2.2			2.9*	1.8	7.0
-3.0m			6.9*	6.2	4.8*	3.3	3.2*	2.2			3.2*	2.2	6.0
-4.5m													

DIPPERSTICK: 3000 mm

BLADE REAR / UP

HEIGHT	REACH												
	1.5 m		3.0 m		4.5 m		6.0 m		7.5 m		Front	Side	Max Reach
	Front	Side	Front	Side	Front	Side	Front	Side	Front	Side			
+7.5m					2.8*	2.8*					1.9*	1.9*	5.6
+6.0m							2.6*	2.4			1.7*	1.7*	6.9
+4.5m					2.9*	2.9*	2.8*	2.4	2.0*	1.6	1.6*	1.5	7.7
+3.0m			4.4*	4.4*	3.9*	3.5	3.0*	2.2	2.4*	1.6	1.6*	1.3	8.1
+1.5m			8.5*	5.7	4.6*	3.2	3.2*	2.1	2.5*	1.5	1.7*	1.3	8.2
0m			7.0*	5.1	5.5	2.9	3.5*	1.9	2.5	1.4	1.9*	1.3	8.0
-1.5m	4.4*	4.4*	8.4*	5.0	5.3	2.7	3.4	1.9	2.5	1.4	2.3*	1.5	7.5
-3.0m	7.0*	7.0*	7.7*	5.0	5.2*	2.7	3.4	1.9			3.0	1.6	6.6
-4.5m			5.0*	5.0*	3.4*	2.8					2.6*	2.4	5.2

BLADE REAR / DOWN

HEIGHT	REACH												
	1.5 m		3.0 m		4.5 m		6.0 m		7.5 m		Front	Side	Max Reach
	Front	Side	Front	Side	Front	Side	Front	Side	Front	Side			
+7.5m					2.8*	2.8*					1.9*	1.9*	5.6
+6.0m							2.6*	2.6*			1.7*	1.7*	6.9
+4.5m					2.9*	2.9*	2.8*	2.7	2.0*	1.8	1.6*	1.6*	7.7
+3.0m			4.4*	4.4*	3.9*	3.9*	3.0*	2.6	2.4*	1.8	1.6*	1.6	8.1
+1.5m			8.5*	6.8	4.6*	3.7	3.2*	2.4	2.5*	1.7	1.7*	1.5	8.2
0m			7.0*	6.2	5.5*	3.4	3.5*	2.3	2.6*	1.6	1.9*	1.5	8.0
-1.5m	4.4*	4.4*	8.4*	6.0	5.9*	3.2	3.8*	2.2	2.5*	1.6	2.3*	1.6	7.5
-3.0m	6.9*	6.9*	7.7*	6.0	5.2*	3.2	3.7*	2.2			3.0*	1.9	6.6
-4.5m			5.0*	5.0*	3.4*	3.4					2.6*	2.6*	5.2

As per ISO 10567 the specified values represent 75% of the static tipping load or 87% of the hydraulic lifting capacity. (*) Limited by hydraulic system.

TRIPLE ARTICULATION - LIFTING CAPACITY

TWO STABILISERS

VALUE ARE EXPRESSED IN TONNES

DIPPERSTICK: 2100 mm STABILISERS REAR / UP

HEIGHT	REACH												
	1.5 m		3.0 m		4.5 m		6.0 m		7.5 m		Front	Side	Max Reach
	Front	Side	Front	Side	Front	Side	Front	Side	Front	Side			
+7.5m											2.7*	2.7*	4.2
+6.0m					3.8*	3.8*					2.3*	2.3*	5.8
+4.5m			4.3*	4.3*	4.0*	3.7	3.1*	2.4			2.2*	1.9	6.7
+3.0m			7.3*	6.3	4.4*	3.5	3.2*	2.3			2.3*	1.7	7.2
+1.5m			5.9*	5.4	5.2*	3.2	3.5*	2.1			2.5*	1.6	7.3
0m			6.5*	5.2	5.4	2.9	3.5	2.0			2.7	1.6	7.1
-1.5m			8.2*	5.2	5.3	2.9	3.5	2.0			3.0	1.8	6.5
-3.0m			6.2*	5.3	4.4*	2.9					3.3*	2.2	5.5
-4.5m													

STABILISERS REAR / DOWN

HEIGHT	REACH												
	1.5 m		3.0 m		4.5 m		6.0 m		7.5 m		Front	Side	Max Reach
	Front	Side	Front	Side	Front	Side	Front	Side	Front	Side			
+7.5m											2.7*	2.7*	4.2
+6.0m					3.8*	3.8*					2.3*	2.3*	5.8
+4.5m			4.3*	4.3*	4.0*	4.0*	3.1*	3.1*			2.2*	2.2*	6.7
+3.0m			7.3*	7.3*	4.4*	4.4*	3.2*	3.1			2.3*	2.3*	7.2
+1.5m			5.9*	5.9*	5.2*	4.5	3.5*	3.0			2.5*	2.2	7.3
0m			6.5*	6.5*	6.1*	4.3	3.8*	2.9			2.9*	2.2	7.1
-1.5m			8.2*	8.2*	5.7*	4.2	4.1*	2.8			3.5*	2.5	6.5
-3.0m			6.2*	6.2*	4.4*	4.3					3.3*	3.2	5.5
-4.5m													

DIPPERSTICK: 2500 mm STABILISERS REAR / UP

HEIGHT	REACH												
	1.5 m		3.0 m		4.5 m		6.0 m		7.5 m		Front	Side	Max Reach
	Front	Side	Front	Side	Front	Side	Front	Side	Front	Side			
+7.5m					2.8*	2.8*					2.2*	2.2*	4.8
+6.0m					3.3*	3.3*	2.6*	2.4			2.0*	2.0*	6.3
+4.5m					3.7*	3.7*	3.0*	2.4			1.9*	1.8	7.1
+3.0m			6.5*	6.5*	4.2*	3.5	3.1*	2.3	2.3*	1.6	1.9*	1.5	7.6
+1.5m			8.4*	5.6	4.9*	3.2	3.4*	2.1	2.6	1.5	2.1*	1.5	7.7
0m			6.8*	5.2	5.5	3.0	3.5	2.0	2.5*	1.5	2.4*	1.5	7.5
-1.5m	5.2*	5.2*	8.7*	5.1	5.3	2.9	3.4	1.9			2.8	1.6	7.0
-3.0m			6.9*	5.2	4.8*	2.9	3.2*	2.0			3.2*	2.0	6.0
-4.5m													

STABILISERS REAR / DOWN

HEIGHT	REACH												
	1.5 m		3.0 m		4.5 m		6.0 m		7.5 m		Front	Side	Max Reach
	Front	Side	Front	Side	Front	Side	Front	Side	Front	Side			
+7.5m					2.8*	2.8*					2.2*	2.2*	4.8
+6.0m					3.3*	3.3*	2.6*	2.6*			2.0*	2.0*	6.3
+4.5m					3.7*	3.7*	3.0*	3.0*			1.9*	1.9*	7.1
+3.0m			6.5*	6.5*	4.2*	4.2*	3.1*	3.1*	2.3*	2.2	1.9*	1.9*	7.6
+1.5m			8.4*	8.4*	4.9*	4.6	3.4*	3.0	2.6*	2.1	2.1*	2.0	7.7
0m			6.8*	6.8*	5.9*	4.2	3.7*	2.9	2.5*	2.1	2.4*	2.1	7.5
-1.5m	5.2*	5.2*	8.7*	8.0	5.8*	4.2	4.0*	2.8			2.9*	2.3	7.0
-3.0m			6.9*	6.9*	4.8*	4.2	3.2*	2.8			3.2*	2.8	6.0
-4.5m													

DIPPERSTICK: 3000 mm STABILISERS REAR / UP

HEIGHT	REACH												
	1.5 m		3.0 m		4.5 m		6.0 m		7.5 m		Front	Side	Max Reach
	Front	Side	Front	Side	Front	Side	Front	Side	Front	Side			
+7.5m					2.8*	2.8*					1.9*	1.9*	5.6
+6.0m							2.6*	2.4			1.7*	1.7*	6.9
+4.5m					2.9*	2.9*	2.8*	2.4	2.0*	1.6	1.6*	1.5	7.7
+3.0m			4.4*	4.4*	3.9*	3.5	3.0*	2.2	2.4*	1.6	1.6*	1.3	8.1
+1.5m			8.5*	5.7	4.6*	3.2	3.2*	2.1	2.5*	1.5	1.7*	1.3	8.2
0m			7.0*	5.1	5.5	2.9	3.5*	1.9	2.5	1.4	1.9*	1.3	8.0
-1.5m	4.4*	4.4*	8.4*	5.0	5.3	2.7	3.4	1.9	2.5	1.4	2.3*	1.5	7.5
-3.0m	7.0*	7.0*	7.7*	5.0	5.2*	2.7	3.4	1.9			3.0	1.6	6.6
-4.5m			5.0*	5.0*	3.4*	2.8					2.6*	2.4	5.2

STABILISERS REAR / DOWN

HEIGHT	REACH												
	1.5 m		3.0 m		4.5 m		6.0 m		7.5 m		Front	Side	Max Reach
	Front	Side	Front	Side	Front	Side	Front	Side	Front	Side			
+7.5m					2.8*	2.8*					1.9*	1.9*	5.6
+6.0m							2.6*	2.6*			1.7*	1.7*	6.9
+4.5m					2.9*	2.9*	2.8*	2.8*	2.0*	2.0*	1.6*	1.6*	7.7
+3.0m			4.4*	4.4*	3.9*	3.9*	3.0*	3.0*	2.4*	2.2	1.6*	1.6*	8.1
+1.5m			8.5*	8.5	4.6*	4.6*	3.2*	3.0	2.5*	2.1	1.7*	1.7*	8.2
0m			7.0*	7.0*	5.5*	4.3*	3.5*	2.8	2.6*	2.1	1.9*	1.9	8.0
-1.5m	4.4*	4.4*	8.4*	8.0	5.9*	4.1	3.7*	2.7	2.5*	2.0	2.3*	2.0	7.5
-3.0m	6.9*	6.9*	7.7*	7.7*	5.2*	4.1	3.6*	2.7			3.0*	2.4	6.6
-4.5m			5.0*	5.0*	3.4*	3.4*					2.6*	2.6*	5.2

As per ISO 10567 the specified values represent 75% of the static tipping load or 87% of the hydraulic lifting capacity. (*) Limited by hydraulic system.

M46

TRIPLE ARTICULATION - LIFTING CAPACITY

BLADE - TWO STABILISERS - FOUR STABILISERS

VALUE ARE EXPRESSED IN TONNES

DIPPERSTICK: 2100 mm BLADE FRONT - TWO STABILISERS / DOWN

HEIGHT	REACH												Max Reach	
	1.5 m		3.0 m		4.5 m		6.0 m		7.5 m		Front	Side		
	Front	Side	Front	Side	Front	Side	Front	Side	Front	Side				
+7.5m												2.7*	2.7*	4.2
+6.0m					3.8*	3.8*						2.3*	2.3*	5.8
+4.5m			4.3*	4.3*	4.0*	4.0*	3.1*	3.1*				2.2*	2.2*	6.7
+3.0m			7.3*	7.3*	4.4*	4.4*	3.2*	3.2*				2.3*	2.3*	7.2
+1.5m			5.9*	5.9*	5.2*	5.2*	3.5*	3.5*				2.5*	2.5*	7.3
0m			6.5*	6.5*	6.1*	5.5	3.8*	3.6				2.9*	2.8	7.1
-1.5m			8.2*	8.2*	5.7*	5.4	4.0*	3.6				3.5*	3.2	6.5
-3.0m			6.2*	6.2*	4.4*	4.4*						3.3*	3.3*	5.5
-4.5m														

DIPPERSTICK: 2100 mm FOUR STABILISERS / DOWN

HEIGHT	REACH												Max Reach			
	1.5 m		3.0 m		4.5 m		6.0 m		7.5 m		Front	Side				
	Front	Side	Front	Side	Front	Side	Front	Side	Front	Side						
+7.5m														2.7*	2.7*	4.2
+6.0m					3.8*	3.8*								2.3*	2.3*	5.8
+4.5m			4.3*	4.3*	4.0*	4.0*	3.1*	3.1*				2.2*	2.2*	6.7		
+3.0m			7.3*	7.3*	4.4*	4.4*	3.2*	3.2*				2.3*	2.3*	7.2		
+1.5m			5.9*	5.9*	5.2*	5.2*	3.5*	3.5*				2.5*	2.5*	7.3		
0m			6.5*	6.5*	6.1*	6.1*	3.8*	3.8*				2.9*	2.9*	7.1		
-1.5m			8.2*	8.2*	5.7*	5.7*	4.1*	4.1*				3.5*	3.5*	6.5		
-3.0m			6.2*	6.2*	4.4*	4.4*						3.3*	3.3*	5.5		
-4.5m																

DIPPERSTICK: 2500 mm BLADE FRONT - TWO STABILISERS / DOWN

HEIGHT	REACH												Max Reach			
	1.5 m		3.0 m		4.5 m		6.0 m		7.5 m		Front	Side				
	Front	Side	Front	Side	Front	Side	Front	Side	Front	Side						
+7.5m					2.8*	2.8*						2.2*	2.2*	4.8		
+6.0m					3.3*	3.3*	2.6*	2.6*				2.0*	2.0*	6.3		
+4.5m					3.7*	3.7*	3.0*	3.0*				1.9*	1.9*	7.1		
+3.0m			6.5*	6.5*	4.2*	4.2*	3.1*	3.1*	2.3*	2.3*		1.9*	1.9*	7.6		
+1.5m			8.4*	8.4*	4.9*	4.9*	3.4*	3.4*	2.6*	2.6*		2.1*	2.1*	7.7		
0m			6.8*	6.8*	5.9*	5.5	3.7*	3.6	2.5*	2.5*		2.4*	2.4*	7.5		
-1.5m	5.2*	5.2*	8.7*	8.7*	5.8*	5.4	4.0*	3.5				2.9*	2.9	6.9		
-3.0m			6.9*	6.9*	4.8*	4.8*	3.2*	3.2*				3.2*	3.2*	6.0		
-4.5m																

DIPPERSTICK: 2500 mm FOUR STABILISERS / DOWN

HEIGHT	REACH												Max Reach			
	1.5 m		3.0 m		4.5 m		6.0 m		7.5 m		Front	Side				
	Front	Side	Front	Side	Front	Side	Front	Side	Front	Side						
+7.5m					2.8*	2.8*						2.2*	2.2*	4.8		
+6.0m					3.3*	3.3*	2.6*	2.6*				2.0*	2.0*	6.3		
+4.5m					3.7*	3.7*	3.0*	3.0*				1.9*	1.9*	7.1		
+3.0m			6.5*	6.5*	4.2*	4.2*	3.1*	3.1*	2.3*	2.3*		1.9*	1.9*	7.6		
+1.5m			8.4*	8.4*	4.9*	4.9*	3.4*	3.4*	2.6*	2.6*		2.1*	2.1*	7.7		
0m			6.8*	6.8*	5.9*	5.9*	3.7*	3.7*	2.5*	2.5*		2.4*	2.4*	7.5		
-1.5m	5.1*	5.1*	8.7*	8.7*	5.8*	5.8*	4.0*	4.0*				2.9*	2.9*	6.9		
-3.0m			6.9*	6.9*	4.8*	4.8*	3.2*	3.2*				3.2*	3.2*	6.0		
-4.5m																

DIPPERSTICK: 3000 mm BLADE FRONT - TWO STABILISERS / DOWN

HEIGHT	REACH												Max Reach	
	1.5 m		3.0 m		4.5 m		6.0 m		7.5 m		Front	Side		
	Front	Side	Front	Side	Front	Side	Front	Side	Front	Side				
+7.5m					2.8*	2.8*						1.9*	1.9*	5.6
+6.0m							2.6*	2.6*				1.7*	1.7*	6.9
+4.5m					2.9*	2.9*	2.8*	2.8*	2.0*	2.0*		1.6*	1.6*	7.7
+3.0m			4.4*	4.4*	3.9*	3.9*	3.0*	3.0*	2.4*	2.4*		1.6*	1.6*	8.1
+1.5m			8.5*	8.5*	4.6*	4.6*	3.2*	3.2*	2.5*	2.5*		1.7*	1.7*	8.2
0m			7.0*	7.0*	5.5*	5.5	3.5*	3.5*	2.6*	2.6		1.9*	1.9*	8.0
-1.5m	4.4*	4.4*	8.4*	8.4*	5.9*	5.3	3.8*	3.5	2.5*	2.5*		2.3*	2.3*	7.5
-3.0m	6.9*	6.9*	7.7*	7.7*	5.2*	5.2*	3.7*	3.5				3.0*	3.0*	6.6
-4.5m			5.0*	5.0*	3.4*	3.4*						2.6*	2.6*	5.2

DIPPERSTICK: 3000 mm FOUR STABILISERS / DOWN

HEIGHT	REACH												Max Reach	
	1.5 m		3.0 m		4.5 m		6.0 m		7.5 m		Front	Side		
	Front	Side	Front	Side	Front	Side	Front	Side	Front	Side				
+7.5m					2.8*	2.8*						1.9*	1.9*	5.6
+6.0m							2.6*	2.6*				1.7*	1.7*	6.9
+4.5m					2.9*	2.9*	2.8*	2.8*	2.0*	2.0*		1.6*	1.6*	7.7
+3.0m			4.4*	4.4*	3.9*	3.9*	3.0*	3.0*	2.4*	2.4*		1.6*	1.6*	8.1
+1.5m			8.5*	8.5*	4.6*	4.6*	3.2*	3.2*	2.5*	2.5*		1.7*	1.7*	8.2
0m			7.0*	7.0*	5.5*	5.5*	3.5*	3.5*	2.6*	2.6*		1.9*	1.9*	8.0
-1.5m	4.4*	4.4*	8.4*	8.0*	5.9*	5.9*	3.8*	3.8*	2.5*	2.5*		2.3*	2.3*	7.5
-3.0m	6.9*	6.9*	7.7*	7.7*	5.2*	5.2*	3.6*	3.6*				3.0*	3.0*	6.6
-4.5m			5.0*	5.0*	3.4*	3.4*						2.6*	2.6*	5.2

As per ISO 10567 the specified values represent 75% of the static tipping load or 87% of the hydraulic lifting capacity. (*) Limited by hydraulic system.

MONOBLOC - LIFTING CAPACITY BLADE

VALUE ARE EXPRESSED IN TONNES

DIPPERSTICK: 2100 mm BLADE REAR / UP

HEIGHT	REACH													
	1.5 m		3.0 m		4.5 m		6.0 m		7.5 m				Max Reach	
	Front	Side	Front	Side	Front	Side	Front	Side	Front	Side	Front	Side		
+7.5m														
+6.0m					3.6*	3.6*						2.3*	2.3*	5.6
+4.5m					3.9*	3.6	3.4*	2.3				2.2*	2.0	6.5
+3.0m			7.0*	6.2	4.8*	3.4	3.8	2.2				2.3*	1.8	7.0
+1.5m			8.1*	5.5	5.7	3.2	3.7	2.1				2.5*	1.7	7.1
0m			7.8*	5.3	5.5	3.0	3.6	2.1				2.9	1.7	6.9
-1.5m	6.4*	6.4*	9.0*	5.3	5.4	3.0	3.6	2.0				3.3	1.9	6.3
-3.0m	10.1*	10.1*	7.2*	5.4	4.9*	3.0						4.0*	2.5	5.2
-4.5m														

BLADE REAR / DOWN

HEIGHT	REACH													
	1.5 m		3.0 m		4.5 m		6.0 m		7.5 m				Max Reach	
	Front	Side	Front	Side	Front	Side	Front	Side	Front	Side	Front	Side		
+7.5m														
+6.0m					3.6*	3.6*						2.3*	2.3*	5.6
+4.5m					3.9*	3.9*	3.4*	2.6				2.2*	2.2*	6.5
+3.0m			7.0*	7.0*	4.8*	3.9	4.0*	2.6				2.3*	2.0	7.0
+1.5m			8.1*	6.6	5.8*	3.7	4.4*	2.5				2.5*	1.9	7.1
0m			7.8*	6.3	6.3*	3.5	4.4	2.4				3.0*	2.0	6.9
-1.5m	6.4*	6.4*	9.0*	6.4	6.0*	3.4	4.3*	2.3				3.9*	2.2	6.3
-3.0m	10.1*	10.1*	7.2*	6.5	4.9*	3.5						4.0*	2.9	5.2
-4.5m														

DIPPERSTICK: 2500 mm BLADE REAR / UP

HEIGHT	REACH													
	1.5 m		3.0 m		4.5 m		6.0 m		7.5 m				Max Reach	
	Front	Side	Front	Side	Front	Side	Front	Side	Front	Side	Front	Side		
+7.5m					2.3*	2.3*						2.2*	2.2*	4.5
+6.0m							2.1*	2.1*				2.0*	2.0*	6.0
+4.5m					3.5*	3.5*	3.3*	2.3				1.9*	1.8	6.9
+3.0m			6.1*	6.1*	4.4*	3.5	3.7*	2.3				1.9*	1.6	7.3
+1.5m			9.0*	5.7	5.5*	3.2	3.7	2.1	2.1*	1.5		2.1*	1.5	7.5
0m			8.2*	5.3	5.5	3.0	3.6	2.0				2.4*	1.6	7.3
-1.5m	5.7*	5.7*	9.4*	5.3	5.4	2.9	3.5	2.0				3.0	1.7	6.7
-3.0m	8.8*	8.8*	7.9*	5.4	5.3*	3.0						3.8	2.2	5.7
-4.5m												4.6	4.6	3.9

BLADE REAR / DOWN

HEIGHT	REACH													
	1.5 m		3.0 m		4.5 m		6.0 m		7.5 m				Max Reach	
	Front	Side	Front	Side	Front	Side	Front	Side	Front	Side	Front	Side		
+7.5m					2.3*	2.3*						2.0*	2.0*	4.5
+6.0m							2.1*	2.1*				1.9*	1.9*	6.0
+4.5m					3.5*	3.5*	3.3*	2.7				1.9*	1.9*	6.9
+3.0m			6.1*	6.1*	4.4*	4.0	3.7*	2.6				1.9*	1.9	7.3
+1.5m			9.0*	6.7	5.5*	3.7	4.2*	2.5	2.1*	1.8		2.1*	1.8	7.5
0m			8.2*	6.4	6.2*	3.5	4.4	2.3				2.4*	1.8	7.3
-1.5m	5.7*	5.7*	9.4*	6.3	6.1*	3.4	4.3	2.3				3.1*	2.0	6.7
-3.0m	8.8*	8.8*	7.9*	6.4	5.3*	3.4						3.8*	2.5	5.7
-4.5m												4.6*	4.6*	3.9

DIPPERSTICK: 3000 mm BLADE REAR / UP

HEIGHT	REACH													
	1.5 m		3.0 m		4.5 m		6.0 m		7.5 m				Max Reach	
	Front	Side	Front	Side	Front	Side	Front	Side	Front	Side	Front	Side		
+7.5m												1.9*	1.9*	5.3
+6.0m							2.5*	2.4				1.7*	1.7*	6.6
+4.5m							3.0*	2.4				1.6*	1.6*	7.4
+3.0m					4.0*	3.5	3.4*	2.3	2.4*	1.6		1.7*	1.5	7.8
+1.5m			8.1*	5.8	5.1*	3.2	3.7	2.1	2.6	1.5		1.8*	1.4	8.0
0m			8.6*	5.3	5.5	3.0	3.6	2.0	2.6	1.5		2.0*	1.4	7.8
-1.5m	5.0*	5.0*	9.6*	5.2	5.4	2.9	3.5	2.0				2.4*	1.5	7.3
-3.0m	7.5*	7.5*	8.5*	5.2	5.4	2.9	3.5	2.0				3.2	1.8	6.4
-4.5m			6.0*	5.4	3.9*	3.0						3.5*	2.7	4.8

BLADE REAR / DOWN

HEIGHT	REACH													
	1.5 m		3.0 m		4.5 m		6.0 m		7.5 m				Max Reach	
	Front	Side	Front	Side	Front	Side	Front	Side	Front	Side	Front	Side		
+7.5m												1.9*	1.9*	5.3
+6.0m							2.5*	2.5*				1.7*	1.7*	6.6
+4.5m							3.0*	2.7				1.6*	1.6*	7.4
+3.0m					4.0*	4.0*	3.4*	2.6	2.4*	1.8		1.7*	1.7*	7.8
+1.5m			8.1*	6.9	5.1*	3.7	4.0*	2.4	2.9*	1.7		1.8*	1.6	8.0
0m			8.6*	6.4	6.0*	3.5	4.3	2.3	3.0*	1.7		2.0*	1.6	7.8
-1.5m	5.0*	5.0*	9.6*	6.2	6.2*	3.4	4.3	2.3				2.4*	1.7	7.3
-3.0m	7.5*	7.5*	8.5*	6.3	5.6*	3.4	3.9*	2.3				3.4*	2.1	6.4
-4.5m			6.0*	6.0*	3.9*	3.5						3.5*	3.2	4.8

As per ISO 10567 the specified values represent 75% of the static tipping load or 87% of the hydraulic lifting capacity. (*) Limited by hydraulic system.

MONOBLOC - LIFTING CAPACITY

TWO STABILISERS

VALUE ARE EXPRESSED IN TONNES

DIPPERSTICK: 2100 mm STABILISERS REAR / UP

HEIGHT	REACH												Max Reach	
	1.5 m		3.0 m		4.5 m		6.0 m		7.5 m		Front	Side		
	Front	Side	Front	Side	Front	Side	Front	Side	Front	Side				
+7.5m														
+6.0m					3.6*	3.6*						2.3*	2.3*	5.6
+4.5m					3.9*	3.7	3.4*	2.4				2.2*	2.1	6.5
+3.0m			7.0*	6.4	4.8*	3.5	3.7	2.3				2.3*	1.8	7.0
+1.5m			8.1*	5.7	5.6	3.2	3.6	2.2				2.5*	1.7	7.1
0m			7.8*	5.4	5.4	3.1	3.5	2.1				2.9	1.7	6.9
-1.5m	6.4*	6.4*	9.0*	5.4	5.4	3.0	3.5	2.1				3.3	1.9	6.3
-3.0m	10.1*	10.1*	7.2*	5.6	4.9*	3.1						4.0*	2.5	5.2
-4.5m														

STABILISERS REAR / DOWN

HEIGHT	REACH												Max Reach	
	1.5 m		3.0 m		4.5 m		6.0 m		7.5 m		Front	Side		
	Front	Side	Front	Side	Front	Side	Front	Side	Front	Side				
+7.5m														
+6.0m					3.6*	3.6*						2.3*	2.3*	5.6
+4.5m					3.9*	3.9*	3.4*	3.2				2.2*	2.2*	6.5
+3.0m			7.0*	7.0*	4.8*	4.8	4.0*	3.1				2.3*	2.3*	7.0
+1.5m			8.1*	8.1*	5.8*	4.5	4.4*	3.0				2.5*	2.3	7.1
0m			7.8*	7.8*	6.3*	4.4	4.4	2.9				3.0*	2.4	6.9
-1.5m	6.4*	6.4*	9.0*	8.3	6.0*	4.3	4.3*	2.9				3.5*	2.7	6.3
-3.0m	10.1*	10.1*	7.2*	7.2*	4.9*	4.4						4.0*	3.5	5.2
-4.5m														

DIPPERSTICK: 2500 mm STABILISERS REAR / UP

HEIGHT	REACH												Max Reach	
	1.5 m		3.0 m		4.5 m		6.0 m		7.5 m		Front	Side		
	Front	Side	Front	Side	Front	Side	Front	Side	Front	Side				
+7.5m					2.3*	2.3*						2.2*	2.2*	4.5
+6.0m							2.1*	2.1*				2.0*	2.0*	6.0
+4.5m					3.5*	3.5*	3.3*	2.4				1.9*	1.9	6.9
+3.0m			6.1*	6.1*	4.4*	3.5	3.7*	2.3				1.9*	1.7	7.3
+1.5m			9.0*	5.8	5.5*	3.3	3.6	2.2	2.1*	1.6		2.1*	1.6	7.5
0m			8.2*	5.5	5.4	3.1	3.5	2.1				2.4*	1.6	7.3
-1.5m	5.7*	5.7*	9.4*	5.4	5.3	3.0	3.5	2.1				2.9	1.8	6.7
-3.0m	8.8*	8.8*	7.9*	5.5	5.3*	3.0						3.7	2.2	5.7
-4.5m												4.6*	4.6*	3.9

STABILISERS REAR / DOWN

HEIGHT	REACH												Max Reach	
	1.5 m		3.0 m		4.5 m		6.0 m		7.5 m		Front	Side		
	Front	Side	Front	Side	Front	Side	Front	Side	Front	Side				
+7.5m					2.3*	2.3*						2.2*	2.2*	4.5
+6.0m							2.1*	2.1*				1.9*	1.9*	6.0
+4.5m					3.5*	3.5*	3.3*	3.2				2.0*	2.0*	6.9
+3.0m			6.1*	6.1*	4.4*	4.4*	3.7*	3.1				1.9*	1.9*	7.3
+1.5m			9.0*	8.7	5.5*	4.6	4.2*	3.0	2.1*	2.1		2.1*	2.1*	7.5
0m			8.2*	8.2*	6.2*	4.4	4.4	2.9				2.4*	2.2	7.3
-1.5m	5.7*	5.7*	9.4*	8.3	6.2*	4.3	4.3	2.9				3.1*	2.4	6.7
-3.0m	8.8*	8.8*	7.9*	7.9*	5.3*	4.3						3.8*	3.1	5.7
-4.5m												4.6*	4.6*	3.9

DIPPERSTICK: 3000 mm STABILISERS REAR / UP

HEIGHT	REACH												Max Reach	
	1.5 m		3.0 m		4.5 m		6.0 m		7.5 m		Front	Side		
	Front	Side	Front	Side	Front	Side	Front	Side	Front	Side				
+7.5m												1.9*	1.9*	5.3
+6.0m							2.5*	2.5*				1.7*	1.7*	6.6
+4.5m							3.0*	2.4				1.6*	1.6*	7.4
+3.0m					3.9*	3.6	3.4*	2.3	2.4*	1.6		1.7*	1.5	7.9
+1.5m			8.1*	5.9	5.1*	3.3	3.6	2.2	2.6	1.6		1.8*	1.4	8.0
0m			8.6*	5.5	5.4	3.1	3.5	2.1	2.5	1.5		2.0*	1.4	7.8
-1.5m	5.0*	5.0*	9.6*	5.3	5.3	3.0	3.4	2.0				2.4*	1.5	7.3
-3.0m	7.5*	7.5*	8.5*	5.4	5.3	3.0	3.4	2.0				3.1	1.9	6.4
-4.5m			6.0*	5.6	3.9*	3.1						3.5*	2.8	4.8

STABILISERS REAR / DOWN

HEIGHT	REACH												Max Reach	
	1.5 m		3.0 m		4.5 m		6.0 m		7.5 m		Front	Side		
	Front	Side	Front	Side	Front	Side	Front	Side	Front	Side				
+7.5m												1.9*	1.9*	5.3
+6.0m							2.5*	2.5*				1.7*	1.7*	6.6
+4.5m							3.0*	3.0*				1.6*	1.6*	7.4
+3.0m					4.0*	4.0*	3.4*	3.2	2.4*	2.2		1.7*	1.7*	7.9
+1.5m			8.1*	8.1*	5.1*	4.6	4.0*	3.0	2.9*	2.2		1.8*	1.8*	8.0
0m			8.6*	8.3	6.0*	4.4	4.4	2.9	3.0*	2.1		2.0*	2.0	7.8
-1.5m	5.0*	5.0*	9.6*	8.2	6.2*	4.2	4.3	2.8				2.4*	2.2	7.3
-3.0m	7.5*	7.5*	8.5*	8.2	5.6*	4.2	3.9*	2.8				3.4*	2.6	6.4
-4.5m			6.0*	6.0*	3.9*	3.9*						3.5*	3.5*	4.8

As per ISO 10567 the specified values represent 75% of the static tipping load or 87% of the hydraulic lifting capacity. (*) Limited by hydraulic system.

MONOBLOC - LIFTING CAPACITY

BLADE - TWO STABILISERS - FOUR STABILISERS

VALUE ARE EXPRESSED IN TONNES

DIPPERSTICK: 2100 mm BLADE FRONT - TWO STABILISERS / DOWN

HEIGHT	REACH												Max Reach	
	1.5 m		3.0 m		4.5 m		6.0 m		7.5 m		Front	Side		
	Front	Side	Front	Side	Front	Side	Front	Side	Front	Side				
+7.5m														
+6.0m					3.6*	3.6*						2.3*	2.3*	5.6
+4.5m					3.9*	3.9*	3.4*	3.4*				2.2*	2.2*	6.5
+3.0m			7.0*	7.0*	4.8*	4.8*	4.0*	3.8				2.3*	2.3*	7.0
+1.5m			8.1*	8.1*	5.8*	5.7	4.4*	3.7				2.5*	2.5*	7.1
0m			7.8*	7.8*	6.3*	5.5	4.6*	3.6				3.0*	3.0*	6.9
-1.5m	6.4*	6.4*	9.0*	9.0*	6.0*	5.5	4.3*	3.6				3.9*	3.4	6.3
-3.0m	10.2*	10.2*	7.2*	7.2*	4.9*	4.9*						4.0*	4.0*	5.2
-4.5m														

DIPPERSTICK: 2100 mm FOUR STABILISERS / DOWN

HEIGHT	REACH												Max Reach	
	1.5 m		3.0 m		4.5 m		6.0 m		7.5 m		Front	Side		
	Front	Side	Front	Side	Front	Side	Front	Side	Front	Side				
+7.5m														
+6.0m					3.6*	3.6*						2.3*	2.3*	5.6
+4.5m					3.9*	3.9*	3.4*	3.4*				2.2*	2.2*	6.5
+3.0m			7.0*	7.0*	4.8*	4.8*	4.0*	4.0*				2.3*	2.3*	7.0
+1.5m			8.1*	8.1*	5.7*	5.8*	4.4*	4.4*				2.5*	2.5*	7.1
0m			7.8*	7.8*	6.3*	6.3*	4.6*	4.2				3.0*	3.0*	6.9
-1.5m	6.4*	6.4*	9.0*	9.0*	6.0*	6.0*	4.3*	4.2				3.9*	3.9*	6.3
-3.0m	10.2*	10.2*	7.2*	7.2*	4.9*	4.9*						4.0*	4.0*	5.2
-4.5m														

DIPPERSTICK: 2500 mm BLADE FRONT - TWO STABILISERS / DOWN

HEIGHT	REACH												Max Reach	
	1.5 m		3.0 m		4.5 m		6.0 m		7.5 m		Front	Side		
	Front	Side	Front	Side	Front	Side	Front	Side	Front	Side				
+7.5m					2.3*	2.3*						2.2*	2.2*	4.5
+6.0m							2.1*	2.1*				2.0*	2.0*	6.0
+4.5m					3.5*	3.5*	3.3*	3.3*				1.9*	1.9*	6.9
+3.0m			6.1*	6.1*	4.4*	4.4*	3.7*	3.7*				1.9*	1.9*	7.3
+1.5m			9.0*	9.0*	5.5*	5.5*	4.2*	3.7	2.1*	2.1*		2.1*	2.1*	7.5
0m			8.2*	8.2*	6.2*	5.6	4.5*	3.6				2.4*	2.4*	7.3
-1.5m	5.7*	5.7*	9.4*	9.4*	6.2*	5.6	4.4*	3.6				3.1*	3.0	6.7
-3.0m	8.8*	8.8*	7.9*	7.9*	5.3*	5.3*						3.8*	3.8*	5.7
-4.5m												4.6*	4.6*	3.9

DIPPERSTICK: 2500 mm FOUR STABILISERS / DOWN

HEIGHT	REACH												Max Reach	
	1.5 m		3.0 m		4.5 m		6.0 m		7.5 m		Front	Side		
	Front	Side	Front	Side	Front	Side	Front	Side	Front	Side				
+7.5m					2.3*	2.3*						2.2*	2.2*	4.5
+6.0m							2.1*	2.1*				2.0*	2.0*	6.0
+4.5m					3.5*	3.5*	3.3*	3.3*				1.9*	1.9*	6.9
+3.0m			6.1*	6.1*	4.4*	4.4*	3.7*	3.7*				1.9*	1.9*	7.3
+1.5m			9.0*	9.0*	5.5*	5.5*	4.2*	3.7	2.1*	2.1*		2.1*	2.1*	7.5
0m			8.2*	8.2*	6.2*	6.2*	4.5*	3.6				2.4*	2.4*	7.3
-1.5m	5.7*	5.7*	9.4*	9.4*	6.2*	6.2*	4.4*	3.6				3.1*	3.1*	6.7
-3.0m	8.8*	8.8*	7.9*	7.9*	5.3*	5.3*						3.8*	3.8*	5.7
-4.5m												4.6*	4.6*	3.9

DIPPERSTICK: 3000 mm BLADE FRONT - TWO STABILISERS / DOWN

HEIGHT	REACH												Max Reach	
	1.5 m		3.0 m		4.5 m		6.0 m		7.5 m		Front	Side		
	Front	Side	Front	Side	Front	Side	Front	Side	Front	Side				
+7.5m												1.9*	1.9*	5.3
+6.0m							2.5*	2.5*				1.7*	1.7*	6.6
+4.5m							3.0*	3.0*				1.6*	1.6*	7.4
+3.0m					4.0*	4.0*	3.4*	3.4*	2.4*	2.4*		1.7*	1.7*	7.8
+1.5m			8.1*	8.1*	5.1*	5.1*	4.0*	3.7*	2.9*	2.7		1.8*	1.8*	8.0
0m			8.6*	8.6*	6.0*	5.6	4.4*	3.6	3.0*	2.6		2.0*	2.0*	7.8
-1.5m	5.0*	5.0*	9.6*	9.6*	6.2*	5.4	4.4*	3.5				2.4*	2.4*	7.3
-3.0m	7.5*	7.5*	8.5*	8.5*	5.6*	5.4	3.9*	3.6				3.4*	3.3	6.4
-4.5m			6.0*	6.0*	3.9*	3.9*						3.5*	3.5*	4.8

DIPPERSTICK: 3000 mm FOUR STABILISERS / DOWN

HEIGHT	REACH												Max Reach	
	1.5 m		3.0 m		4.5 m		6.0 m		7.5 m		Front	Side		
	Front	Side	Front	Side	Front	Side	Front	Side	Front	Side				
+7.5m												1.9*	1.9*	5.3
+6.0m							2.5*	2.5*				1.7*	1.7*	6.6
+4.5m							3.0*	3.0*				1.6*	1.6*	7.4
+3.0m					4.0*	4.0*	3.4*	3.4*	2.4*	2.4*		1.7*	1.7*	7.8
+1.5m			8.1*	8.1*	5.1*	5.1*	4.0*	3.7*	2.9*	2.9*		1.8*	1.8*	8.0
0m			8.6*	8.6*	6.0*	6.0*	4.4*	4.3	3.0*	3.0*		2.0*	2.0*	7.8
-1.5m	5.0*	5.0*	9.6*	9.6*	6.2*	6.2*	4.4*	4.2				2.4*	2.4*	7.3
-3.0m	7.5*	7.5*	8.5*	8.5*	5.6*	5.6*	3.9*	3.9*				3.4*	3.4*	6.4
-4.5m			6.0*	6.0*	3.9*	3.9*						3.5*	3.5*	4.8

As per ISO 10567 the specified values represent 75% of the static tipping load or 87% of the hydraulic lifting capacity. (*) Limited by hydraulic system.



PARTS & SERVICE

The New Holland dealer network is, in itself, the best guarantee of continued productivity for the machines it delivers to its customers. New Holland service technicians are fully equipped to resolve all maintenance and repair issues, with each and every service point providing the high standards they are obliged to observe under New Holland's stringent quality guidelines. The New Holland global parts network ensures fast, reliable, replacement parts for less downtime, increased productivity and, of course, profitable operation for its customers.

AT YOUR OWN DEALERSHIP

The information contained in this brochure is intended to be a general nature only. The NEW HOLLAND KOBELCO CONSTRUCTION MACHINERY S.p.A. company may at any time and from time to time, for technical or other necessary reasons, modify any of the details or specifications of the product described in this brochure. Illustrations do not necessarily show products in standard conditions. The dimensions, weights and capacities shown herein, as well as any conversion data used, are approximate only and are subject to variations within normal manufacturing techniques.

Published by NEW HOLLAND KOBELCO CONSTRUCTION MACHINERY S.p.A. - www.newholland.com
 Printed in Italy - LEADER Firenze - Cod. 73301821 - INB - Printed 02/05

 **NEW HOLLAND**



NEW HOLLAND IS A BRAND OF CNH.
CNH: THE TOTAL SOLUTIONS CHOICE FOR YOUR SPECIFIC BUSINESS NEEDS.